

Product datasheet for **TA336913**

Fibronectin (FN1) Mouse Monoclonal Antibody [Clone ID: 2F4]

Product data:

Product Type:	Primary Antibodies
Clone Name:	2F4
Applications:	ELISA, FC, ICC/IF, IHC, WB
Recommended Dilution:	Flow Cytometry: 1:200 - 1:400, Immunohistochemistry: 1:200 - 11:1000, Immunohistochemistry-Paraffin: 1:200 - 1:1000, Western Blot: 1:500 - 1:1000, ELISA: 1:10000, Immunocytochemistry/ Immunofluorescence: 1:100
Reactivity:	Human
Host:	Mouse
Isotype:	IgG1
Clonality:	Monoclonal
Immunogen:	Purified recombinant fragment of human Fibronectin expressed in E. coli. [UniProt# P02751]
Formulation:	Preservative: 0.05% Sodium Azide. Aliquot and store at -20C or -80C. Avoid freeze-thaw cycles.
Concentration:	lot specific
Purification:	Ascites
Conjugation:	Unconjugated
Storage:	Store at -20°C as received.
Stability:	Stable for 12 months from date of receipt.
Predicted Protein Size:	262.6 kDa
Gene Name:	fibronectin 1
Database Link:	NP_997639 Entrez Gene 2335 Human P02751



[View online »](#)

Background: This gene encodes fibronectin, a glycoprotein present in a soluble dimeric form in plasma, and in a dimeric or multimeric form at the cell surface and in extracellular matrix. Fibronectin is involved in cell adhesion and migration processes including embryogenesis, wound healing, blood coagulation, host defense, and metastasis. The gene has three regions subject to alternative splicing, with the potential to produce 20 different transcript variants. However, the full-length nature of some variants has not been determined.

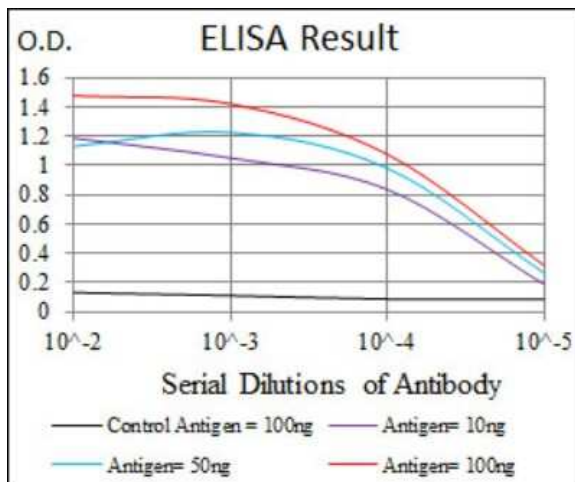
Synonyms: CIG; ED-B; FINC; FN; FNZ; GFND; GFND2; LETS; MSF

Note: This Fibronectin (2F4) antibody is useful for Western blot, Immunohistochemistry on paraffin-embedded sections, Flow Cytometry and ELISA.

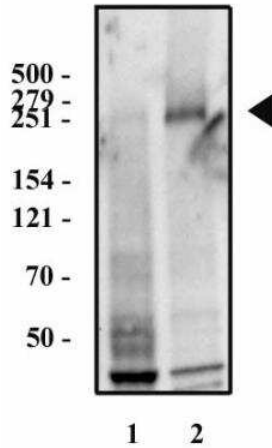
Protein Families: Druggable Genome, ES Cell Differentiation/IPS, Secreted Protein

Protein Pathways: ECM-receptor interaction, Focal adhesion, Pathways in cancer, Regulation of actin cytoskeleton, Small cell lung cancer

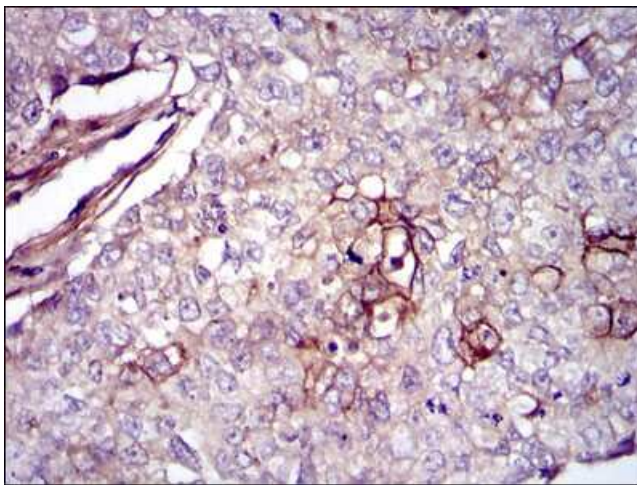
Product images:



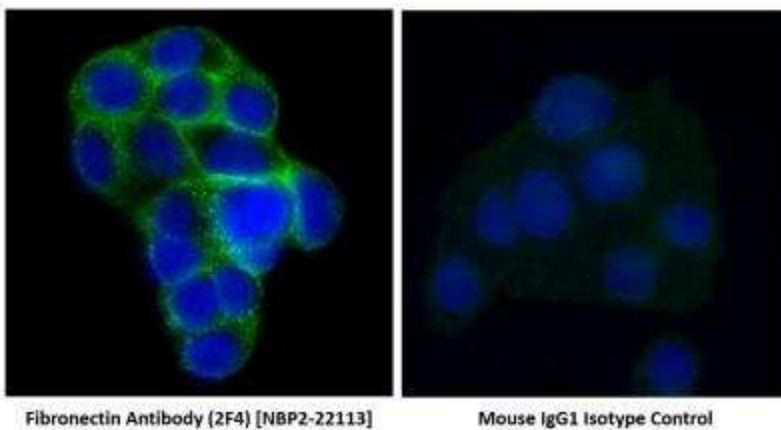
ELISA: Fibronectin Antibody (2F4) TA336913 - Red: Control Antigen (100 ng); Purple: Antigen (10 ng); Green: Antigen (50 ng); Blue: Antigen (100 ng).



Western Blot: Fibronectin Antibody (2F4) TA336913 - Analysis of HeLa (1) and HepG2 (2) whole cell lysates using Fibronectin antibody (2F4) at 2 ug/mL.



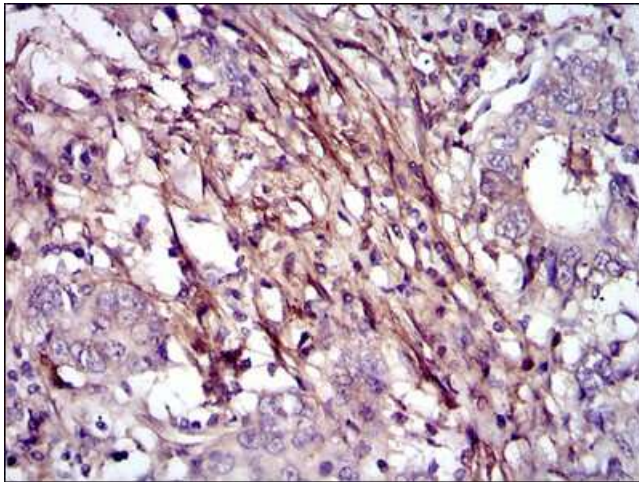
Immunohistochemistry-Paraffin: Fibronectin Antibody (2F4) TA336913 - Analysis of paraffin-embedded lung cancer tissues using Fibronectin mouse mAb with DAB staining.



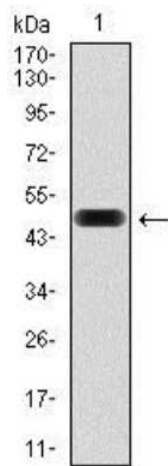
Fibronectin Antibody (2F4) [NBP2-22113]

Mouse IgG1 Isotype Control

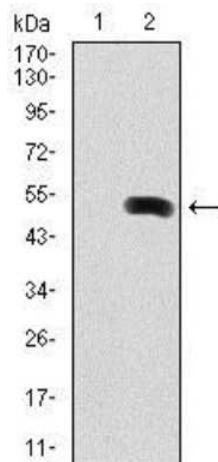
Immunocytochemistry/Immunofluorescence: Fibronectin Antibody (2F4) TA336913 - Analysis of cultured HepG2 cells using Fibronectin antibody (clone 2F4) at 1:100 dilution. The cells were fixed in formalin and permeabilized using PBS with 0.1% Triton X-100 before incubating them with Fibronectin antibody or the mouse IgG1 isotype control antibody. DyLight 488 conjugated goat anti-mouse IgG (H+L) cross-adsorbed secondary antibody was used at 1: 200 dilution to detect the antigen-primary antibody complexes and the cells were counterstained with DAPI for labeling the nuclei. This Fibronectin antibody generated the expected punctate cytoplasmic-membranous staining and the signal was localized more to the inter-cellular spaces in clustered cells.



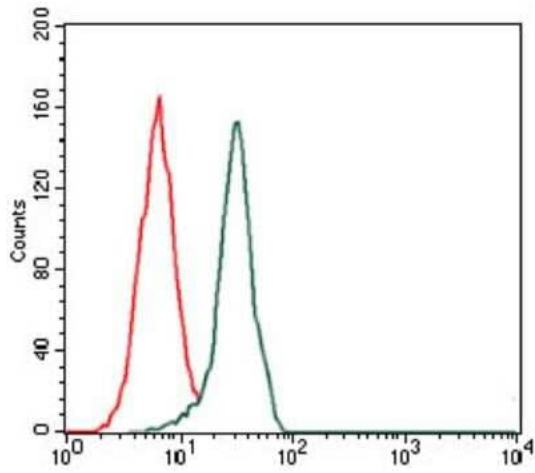
Immunohistochemistry-Paraffin: Fibronectin Antibody (2F4) TA336913 - Analysis of paraffin-embedded stomach cancer tissues using Fibronectin mouse mAb with DAB staining.



Western Blot: Fibronectin Antibody (2F4) TA336913 - Analysis using Fibronectin mAb against human Fibronectin (AA: 1965-2176) recombinant protein. Expected MW is 49.6 kDa.



Western Blot: Fibronectin Antibody (2F4) TA336913 - Analysis using Fibronectin mAb against HEK293 (1) and Fibronectin (AA: 1965-2176)-hlgGfc transfected HEK293 (2) cell lysate.



Flow Cytometry: Fibronectin Antibody (2F4) TA336913 - Analysis of HeLa cells using Fibronectin mouse mAb (green) and negative control (red).