

## Product datasheet for **TA336848**

### TLR4 Rabbit Polyclonal Antibody

#### Product data:

Product Type:	Primary Antibodies
Applications:	FC, ICC/IF, IHC, WB
Recommended Dilution:	Western Blot: 1:1000, Immunohistochemistry-Paraffin: 1:50, Immunohistochemistry: 1:50, Immunocytochemistry/ Immunofluorescence: 1:50, Flow Cytometry: 2 - 5 ug / million cells
Reactivity:	Human, Mouse, Rat
Host:	Rabbit
Clonality:	Polyclonal
Immunogen:	A synthetic peptide made to the C-terminal portion of the human TLR4 protein (between residues 650-710) [UniProt O00206]
Formulation:	PBS, 0.05% Sodium Azide. Store at 4C short term. Aliquot and store at -20C long term. Avoid freeze-thaw cycles.
Concentration:	lot specific
Purification:	Immunogen affinity purified
Conjugation:	Unconjugated
Storage:	Store at -20°C as received.
Stability:	Stable for 12 months from date of receipt.
Gene Name:	toll like receptor 4
Database Link:	<a href="#">NP_612564</a> <a href="#">Entrez Gene 21898 Mouse</a> <a href="#">Entrez Gene 29260 Rat</a> <a href="#">Entrez Gene 7099 Human</a> <a href="#">O00206</a>
Background:	Toll like receptor 4 (TLR4) detects lipopolysaccharide of bacteria. This functionality is critical to activate the innate immune system response. HSP70 expression is enhanced when TLR4 expression is increased, resulting in an impact of the heat shock pathway in inflammation caused by infection. TLR4 binds to lipopolysaccharide and potentiates G-protein coupled receptor signaling, which then induces Neu1 expression. Cell surface expression of Neu1 and TLR4 on macrophages is critical in the ligand activation and inflammation mechanisms. Ultimately, TLR4 can be considered as one of the key elements responsible for inflammatory cytokine release and positive feedback in inflammation.



[View online »](#)

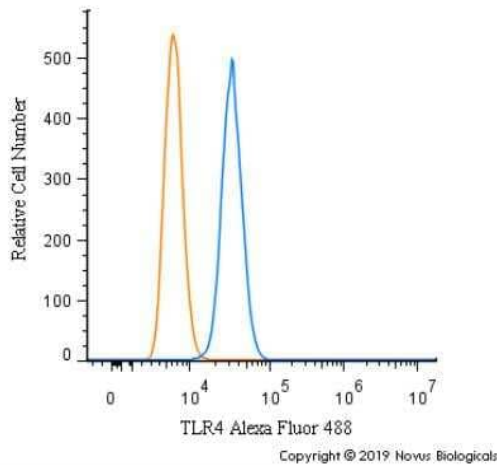
**Synonyms:** ARMD10; CD284; TLR-4; TOLL

**Note:** This TLR4 antibody is useful in Immunocytochemistry/Immunofluorescence, Immunohistochemistry on paraffin-embedded sections and Western blot. Prior to immunostaining paraffin tissues, antigen retrieval with sodium citrate buffer (pH 6.0) is recommended.

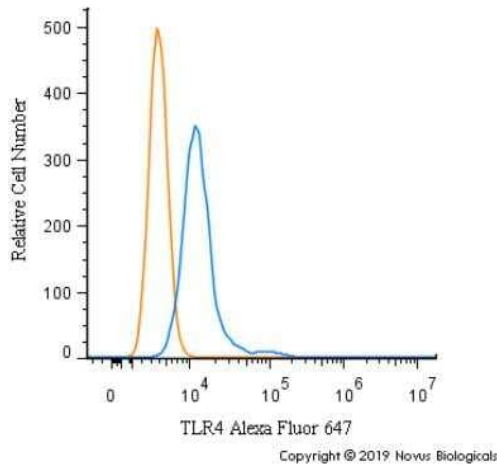
**Protein Families:** Druggable Genome, Transmembrane

**Protein Pathways:** Pathogenic Escherichia coli infection, Toll-like receptor signaling pathway

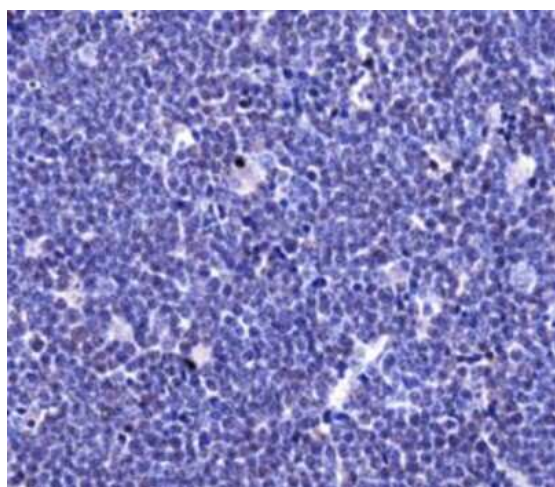
**Product images:**



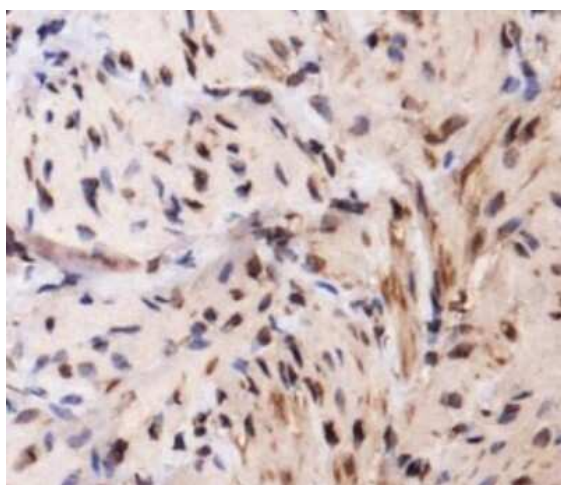
Flow Cytometry: TLR4 Antibody TA336848 - An intracellular stain was performed on RH-30 cells with TA336848AF488 (blue) and a matched isotype control (orange). Cells were fixed with 4% PFA and then permeabilized with 0.1% saponin. Cells were incubated in an antibody dilution of 5 ug/mL for 30 minutes at room temperature. Both antibodies were conjugated to Alexa Fluor 488.



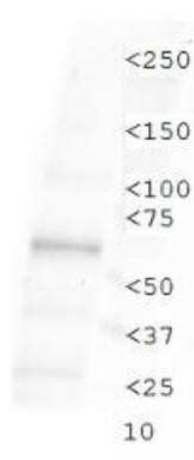
Flow Cytometry: TLR4 Antibody TA336848 - An intracellular stain was performed on RH-30 cells with TLR4 Antibody TA336848AF647 (blue) and a matched isotype control (orange). Cells were fixed with 4% PFA and then permeabilized with 0.1% saponin. Cells were incubated in an antibody dilution of 2.5 ug/mL for 30 minutes at room temperature. Both antibodies were conjugated to Alexa Fluor 647.



Immunohistochemistry: TLR4 Antibody TA336848  
- Analysis of TLR4 in mouse spleen using DAB with hematoxylin counterstain.



Immunohistochemistry: TLR4 Antibody TA336848  
- Analysis of TLR4 in mouse smooth muscle using DAB with hematoxylin counterstain.



Western Blot: TLR4 Antibody TA336848 - Analysis of TLR4 in Raw 264.7 cell lysate.