

## Product datasheet for **TA336846**

### NOTCH1 Rabbit Polyclonal Antibody

#### Product data:

Product Type:	Primary Antibodies
Applications:	ICC/IF, IHC, Simple Western, WB
Recommended Dilution:	Simple Western: 1:50, Immunohistochemistry: 1:200, Immunocytochemistry/ Immunofluorescence: 1:10-1:500, Western Blot: 2 ug/ml, Immunohistochemistry-Paraffin: 1:200
Reactivity:	Human, Mouse
Host:	Rabbit
Clonality:	Polyclonal
Immunogen:	A synthetic peptide made to a C-terminal portion of the human NOTCH1 protein (between residues 2300-2350) [UniProt P46531]
Formulation:	PBS with 30% Glycerol, 0.05% Sodium Azide. Store at 4C short term. Aliquot and store at -20C long term. Avoid freeze-thaw cycles.
Concentration:	lot specific
Purification:	Affinity purified
Conjugation:	Unconjugated
Storage:	Store at -20°C as received.
Stability:	Stable for 12 months from date of receipt.
Gene Name:	notch 1
Database Link:	<a href="#">NP_060087</a> <a href="#">Entrez Gene 18128 Mouse</a> <a href="#">Entrez Gene 4851 Human</a> <a href="#">P46531</a>



[View online »](#)

**Background:**

Notch1 is a single-pass transmembrane protein that serves as the receptor for the Delta1, Jagged1 and Jagged2 ligands. Activation of Notch1 causes the cytoplasmic domain to be cleaved, releasing the notch intracellular domain (NICD) which forms a complex with RBPJ/RBPSUH and subsequently influences transcription of its target genes. Because the majority of Notch1 ligands are transmembrane proteins, Notch1 is primarily triggered by cell-to-cell contact and employs lateral inhibition mechanisms to influence local populations of cells. The Notch1 pathway plays a pivotal role in development, including cell-fate determination, proliferation, and cell contact-dependent signaling. Aberrant activation of the Notch1 pathway has been associated with numerous diseases such as bicuspid aortic valve and cancer-- in particular certain leukemias.

**Synonyms:**

AOS5; AOVD1; hN1; TAN1

**Note:**

This Notch1 antibody is useful for Western Blot and Immunohistochemistry-Paraffin. In Western Blot, a band is seen ~120 kDa representing the cleaved form of Notch1 peptide. In IHC-P, staining of nucleus and cell membrane was observed in human kidney carcinoma tissue. Prior to immunostaining paraffin tissues, antigen retrieval with sodium citrate buffer (pH 6.0) is recommended.

**Protein Families:**

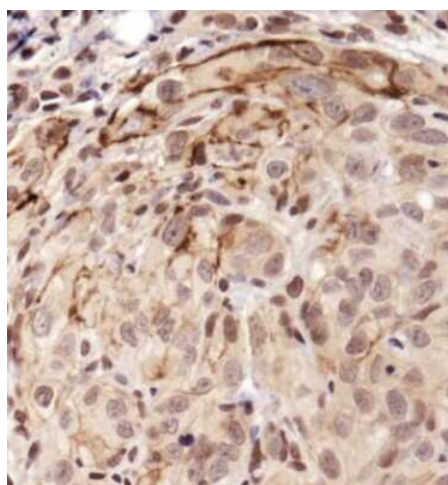
Adult stem cells, Cancer stem cells, Druggable Genome, ES Cell Differentiation/IPS, Stem cell relevant signaling - DSL/Notch pathway

**Protein Pathways:**

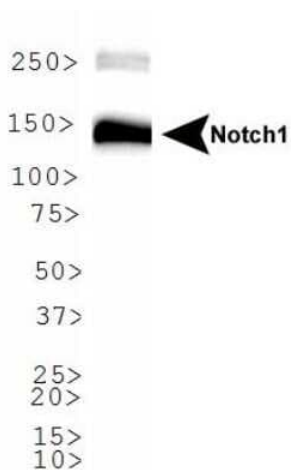
Dorso-ventral axis formation, Notch signaling pathway, Prion diseases

**Product images:**

Simple Western: Notch-1 Antibody TA336846 - Lane view shows a specific band for Notch-1 in 0.5 mg/ml of Jurkat lysate. This experiment was performed under reducing conditions using the 12-230 kDa separation system.



Immunohistochemistry: Notch-1 Antibody TA336846 - Staining of Notch1 in human kidney carcinoma using DAB with hematoxylin counterstain.



Western Blot: Notch-1 Antibody TA336846 - Analysis of Cleaved Notch1 in Jurkat cell lysate.