

## Product datasheet for **TA336809**

### beta Catenin (CTNNB1) Mouse Monoclonal Antibody [Clone ID: 12F7]

#### Product data:

Product Type:	Primary Antibodies
Clone Name:	12F7
Applications:	FC, ICC/IF, IHC, IP, Simple Western, WB
Recommended Dilution:	Flow (Intracellular), Immunoprecipitation: 1:10-1:500, Western Blot: 1:1000, Immunohistochemistry-Paraffin: 1:100-1:200, Simple Western: 1:100, Immunohistochemistry: 1:100-1:200, Immunocytochemistry/ Immunofluorescence: 1:50-1:100, Flow Cytometry
Reactivity:	Human, Mouse, Rat, Chicken, Primate
Host:	Mouse
Isotype:	IgG1
Clonality:	Monoclonal
Immunogen:	Recombinant chicken beta Catenin fused to maltose binding protein. [UniProt# O42486]
Formulation:	PBS, pH 7.4, 0.1% Sodium Azide. Aliquot and store at -20C or -80C. Avoid freeze-thaw cycles.
Concentration:	lot specific
Purification:	Protein G purified
Conjugation:	Unconjugated
Storage:	Store at -20°C as received.
Stability:	Stable for 12 months from date of receipt.
Predicted Protein Size:	92 kDa
Gene Name:	catenin beta 1
Database Link:	<a href="#">NP_001895</a> <a href="#">Entrez Gene 12387 Mouse</a> <a href="#">Entrez Gene 84353 Rat</a> <a href="#">Entrez Gene 1499 Human</a> <a href="#">P35222</a>
Synonyms:	armadillo; CTNNB; MRD19
Note:	This beta Catenin (12F7) antibody is useful for Immunohistochemistry on paraffin embedded sections, Immunocytochemistry/Immunofluorescence, Immunoprecipitation and Western blot, where a band can be seen at ~ 92 kDa.
Protein Families:	Druggable Genome, ES Cell Differentiation/IPS, Transcription Factors

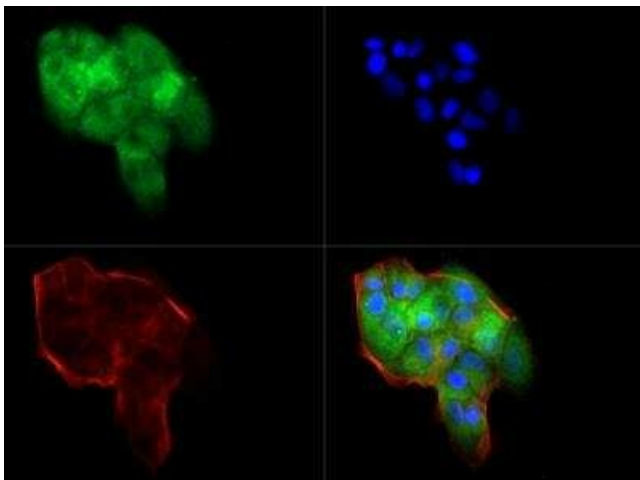


[View online »](#)

**Protein Pathways:**

Adherens junction, Arrhythmogenic right ventricular cardiomyopathy (ARVC), Basal cell carcinoma, Colorectal cancer, Endometrial cancer, Focal adhesion, Leukocyte transendothelial migration, Melanogenesis, Pathogenic Escherichia coli infection, Pathways in cancer, Prostate cancer, Thyroid cancer, Tight junction, Wnt signaling pathway

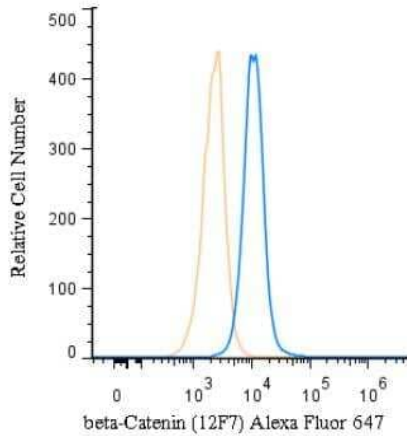
**Product images:**



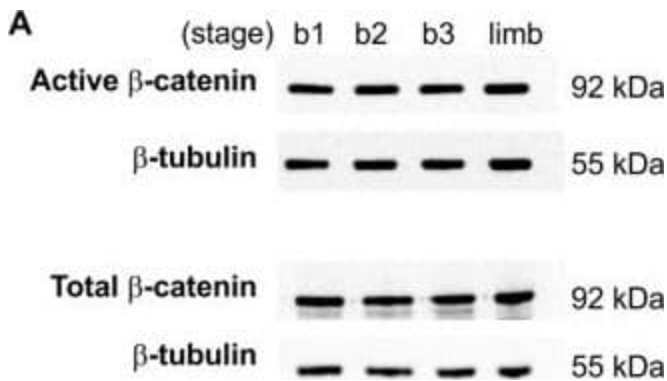
Immunocytochemistry/Immunofluorescence: beta-Catenin Antibody (12F7) TA336809 - The beta- Catenin antibody was tested in MCF-7 cells against Dylight 488 (Green). Actin and nuclei were counterstained against Phalloidin 550 (Red) and DAPI (Blue).



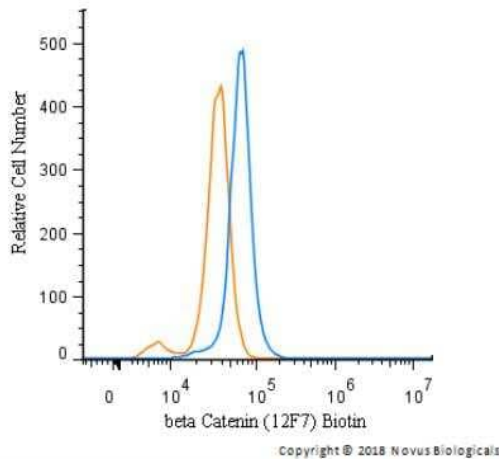
Simple Western: beta-Catenin Antibody (12F7) TA336809 - Simple Western lane view shows a specific band for Beta- Catenin in 0.5 mg/ml of HepG2 lysate. This experiment was performed under reducing conditions using the 12-230 kDa separation system.



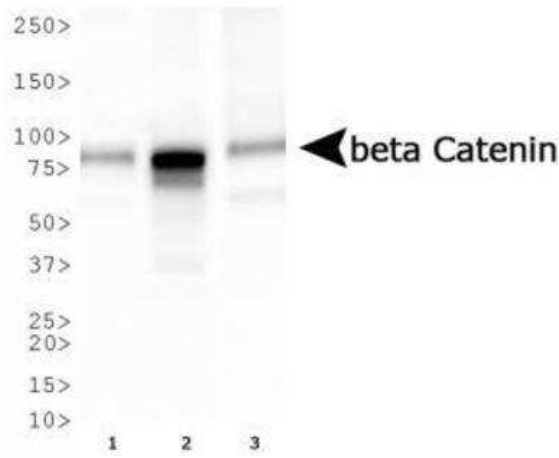
Flow (Intracellular): beta-Catenin Antibody (12F7) TA336809 - An intracellular stain was performed on HeLa cells with beta-Catenin Antibody (12F7) TA336809AF647 (blue) and a matched isotype control (orange). Cells were fixed with 4% PFA and then permeabilized with 0.1% saponin. Cells were incubated in an antibody dilution of 5 ug/mL for 30 minutes at room temperature. Both antibodies were conjugated to Alexa Fluor 647.



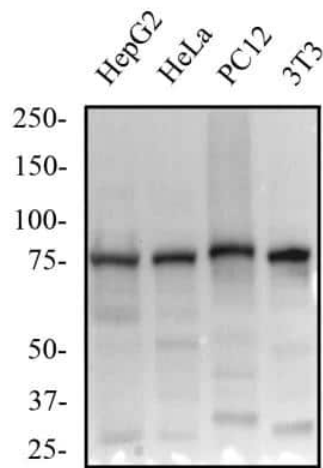
Activity of Wnt/ $\beta$ -catenin pathway in the embryonic chick lung.(A) Western blot analysis of active and total  $\beta$ -catenin in stage b1, b2 and b3 lungs, and stage 24 limb (as positive control). Control loading was performed using  $\beta$ -tubulin (55 kDa). Total and active  $\beta$ -catenin correspond to 92 kDa. (B) Semi-quantitative analysis for active and total  $\beta$ -catenin. Results are presented as arbitrary units normalized for  $\beta$ -tubulin.  $p < 0.05$ : \* vs limb.



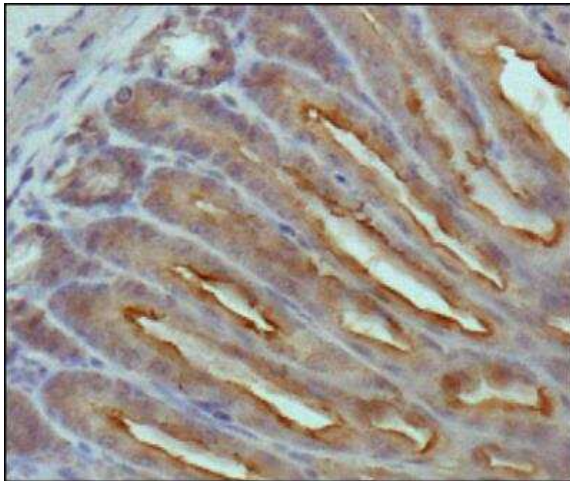
Flow Cytometry: beta-Catenin Antibody (12F7) TA336809 - An intracellular stain was performed on SK-MEL-28 cells with beta-Catenin Antibody [12F7] TA336809B (blue) and a matched isotype control (orange). Both antibodies were conjugated to Biotin. Cells were fixed with 4% PFA and then permeabilized with 0.1% saponin. Cells were incubated in an antibody dilution of 2.5 ug/mL for 30 minutes at room temperature, followed by Streptavidin - R-Phycoerythrin Protein (2012-1000, Novus Biologicals).



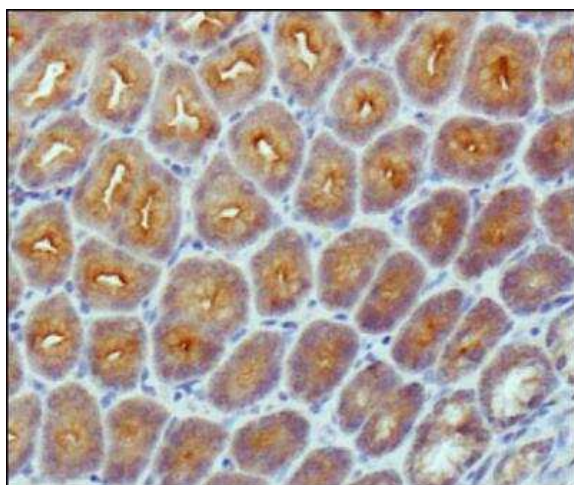
Western Blot: beta-Catenin Antibody (12F7) TA336809 - Analysis of beta Catenin expression in 1) HepG2, 2) MCF7, and 3) Cos7 whole cell lysates using TA336809.



Western Blot: beta-Catenin Antibody (12F7) TA336809 - Total protein from human HepG2 and HeLa cells, rat PC12 cells and mouse 3T3 cells was separated on a 7.5% gel by SDS-PAGE, transferred to PVDF membrane and blocked in 5% non-fat milk in TBST. The membrane was probed with 1.0 ug/ml anti-Beta catenin in 1% non-fat milk in TBST and detected with an anti-mouse HRP secondary antibody using chemiluminescence.



Immunohistochemistry-Paraffin: beta-Catenin Antibody (12F7) TA336809 - Analysis of beta Catenin in mouse intestine using DAB with hematoxylin counterstain.



Immunohistochemistry-Paraffin: beta-Catenin Antibody (12F7) TA336809 - Analysis of beta-Catenin in mouse intestine using DAB with hematoxylin counterstain.