

## Product datasheet for **TA336775**

### VCAM1 Mouse Monoclonal Antibody [Clone ID: 6G9]

#### Product data:

Product Type:	Primary Antibodies
Clone Name:	6G9
Applications:	ELISA, IHC, Immunoblotting, IP, Simple Western, WB
Recommended Dilution:	Simple Western: 1:1000, ELISA: 1:10000, Immunoprecipitation, Immunoblotting, Western Blot: 1:500-1:2000, Immunohistochemistry: 1:200-1:1000, Immunohistochemistry-Paraffin: 1:200-1:1000
Reactivity:	Human
Host:	Mouse
Isotype:	IgG1
Clonality:	Monoclonal
Immunogen:	Purified recombinant fragment of human VCAM1 expressed in E. coli. [UniProt# P19320]
Formulation:	PBS, 0.03% Sodium Azide. Store at 4C short term. Aliquot and store at -20C long term. Avoid freeze-thaw cycles.
Concentration:	lot specific
Purification:	Ammonium sulfate precipitation
Conjugation:	Unconjugated
Storage:	Store at -20°C as received.
Stability:	Stable for 12 months from date of receipt.
Predicted Protein Size:	81 kDa
Gene Name:	vascular cell adhesion molecule 1
Database Link:	<a href="#">NP_001069</a> <a href="#">Entrez Gene 7412 Human</a> <a href="#">P19320</a>



[View online »](#)

**Background:** VCAM1 is a member of the Ig superfamily and encodes a cell surface sialoglycoprotein expressed by cytokine-activated endothelium. This type I membrane protein mediates leukocyte-endothelial cell adhesion and signal transduction, and may play a role in the development of atherosclerosis and rheumatoid arthritis. Two alternatively spliced transcripts encoding different isoforms have been described for this gene. Tissue specificity: Expressed on inflamed vascular endothelium, as well as on macrophage-like and dendritic cell types in both normal and inflamed tissue.

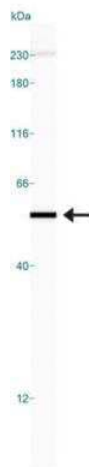
**Synonyms:** CD106; INCAM-100

**Note:** This VCAM1 (6G9) antibody is useful for Western blot, Immunohistochemistry on paraffin-embedded sections and ELISA.

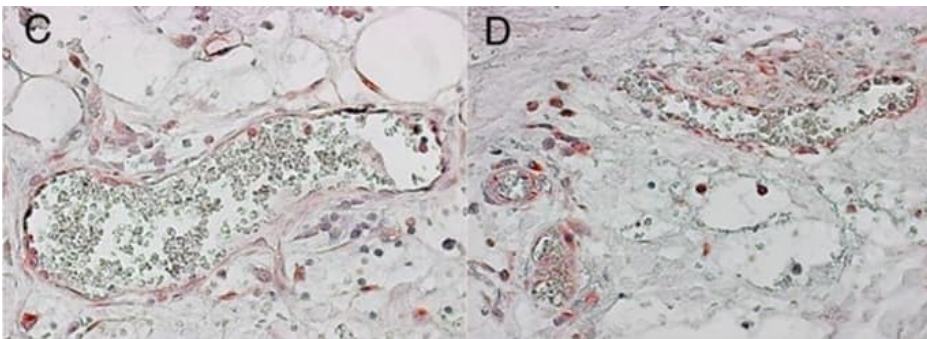
**Protein Families:** Druggable Genome, ES Cell Differentiation/IPS, Transmembrane

**Protein Pathways:** Cell adhesion molecules (CAMs), Leukocyte transendothelial migration

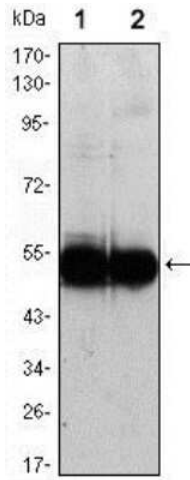
**Product images:**



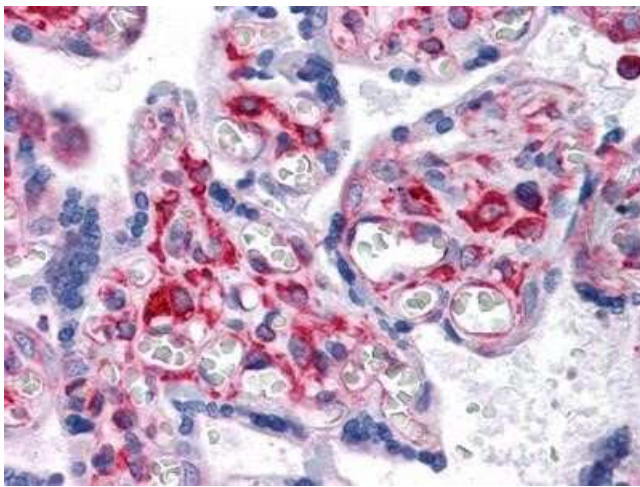
Simple Western: VCAM-1/CD106 Antibody (6G9) TA336775 - Lane view shows a specific band for CD106/VCAM1 in 0.5 mg/mL of HUVEC lysate. This experiment was performed under reducing conditions using the 12-230 kDa separation system.



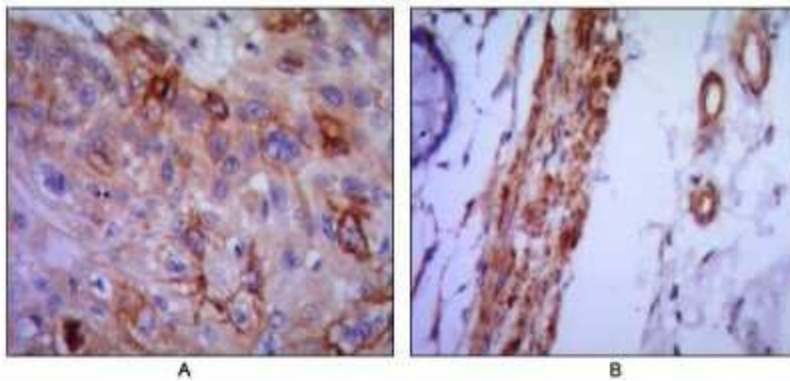
Photomicrographs of two separate gut sections from a patient with EHEC colitis. Panels (A) and (B) are stained with CD31 to enumerate endothelium lining the vessels (40× magnification). (C) and (D) are stained to show VCAM-1 expression in endothelium, indicating inflammatory activation (40× magnification).



Western Blot: VCAM-1/CD106 Antibody (6G9) TA336775 - Using VCAM1 mouse mAb against (1) HUVEC and (2) EC cell lysate.



Immunohistochemistry-Paraffin: VCAM-1/CD106 Antibody (6G9) TA336775 - Human placenta tissues using VCAM1 mouse mAb.



Immunohistochemistry-Paraffin: VCAM-1/CD106 Antibody (6G9) TA336775 - (A) human lung cancer and (B) colon cancer using VCAM1 mouse mAb with DAB staining.