

Product datasheet for **TA336754**

beta III Tubulin (TUBB3) Mouse Monoclonal Antibody [Clone ID: 2E9]

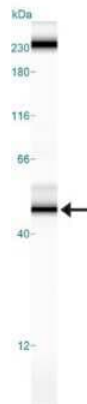
Product data:

Product Type:	Primary Antibodies
Clone Name:	2E9
Applications:	ELISA, FC, ICC/IF, IHC, Simple Western, WB
Recommended Dilution:	Simple Western: 1:500, Flow Cytometry: 1:200-1:400, ELISA: 1:10000, Immunocytochemistry/Immunofluorescence: 1:200-1:1000, Western Blot: 1:500-1:2000, Immunohistochemistry
Reactivity:	Human, Rat
Host:	Mouse
Isotype:	IgG1
Clonality:	Monoclonal
Immunogen:	Purified recombinant fragment of human Tubulin Beta 3 expressed in E. coli. [UniProt# Q13509]
Formulation:	Preservative: 0.05% Sodium Azide. Aliquot and store at -20C or -80C. Avoid freeze-thaw cycles.
Concentration:	lot specific
Purification:	Ascites
Conjugation:	Unconjugated
Storage:	Store at -20°C as received.
Stability:	Stable for 12 months from date of receipt.
Predicted Protein Size:	50 kDa
Gene Name:	tubulin beta 3 class III
Database Link:	NP_006077 Entrez Gene 246118 Rat Entrez Gene 10381 Human Q13509

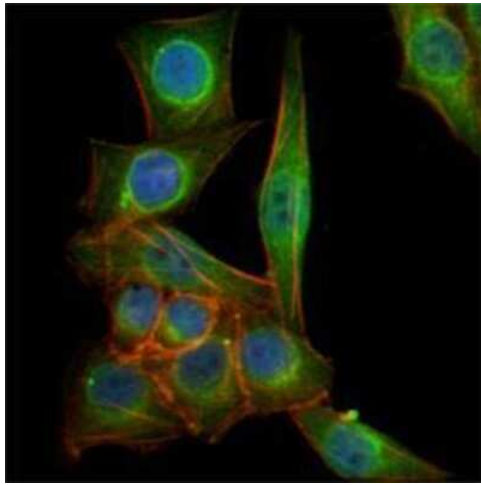


[View online »](#)

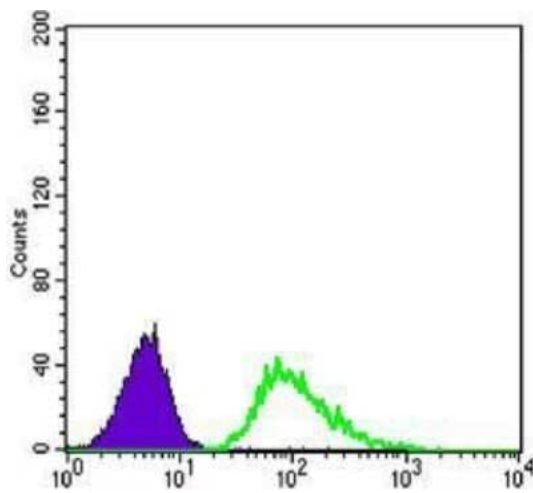
- Background:** Tubulin Beta 3 is abundant in the central and peripheral nervous systems (CNS and PNS) where it is prominently expressed during fetal and postnatal development. As exemplified in cerebellar and sympathoadrenal neurogenesis, the distribution of Tubulin Beta 3 is neuron-associated, exhibiting distinct temporospatial gradients according to the regional neuroepithelia of origin. However, transient expression of this protein is also present in the subventricular zones of the CNS comprising putative neuronal- and/or glial precursor cells, as well as in Kulchitsky neuroendocrine cells of the fetal respiratory epithelium. This temporally restricted, potentially non-neuronal expression may have implications in the identification of presumptive neurons derived from embryonic stem cells. In adult tissues, the distribution of Tubulin Beta 3 is almost exclusively neuron-specific.
- Synonyms:** beta-4; CDCBM; CDCBM1; CFEOM3; CFEOM3A; FEOM3; TUBB4
- Note:** This Tubulin Beta 3 (2E9) antibody is useful in Western Blot, Immunocytochemistry/Immunofluorescence, Flow cytometry and ELISA.
- Protein Families:** Druggable Genome, ES Cell Differentiation/IPS
- Protein Pathways:** Gap junction, Pathogenic Escherichia coli infection
- Product images:**



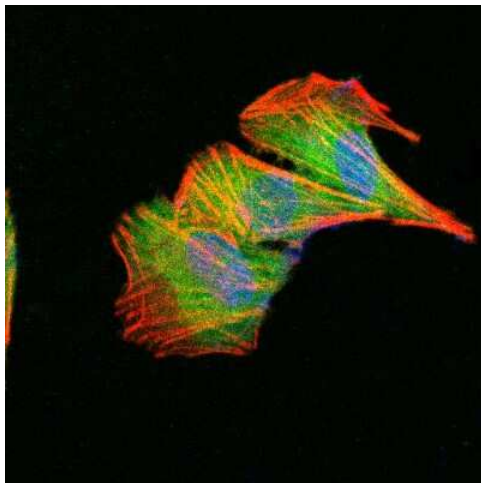
Simple Western: beta-III Tubulin Antibody (2E9) TA336754 - Lane view shows a specific band for Tubulin Beta 3 in 1.0 mg/ml of HeLa lysate. This experiment was performed under reducing conditions using the 12-230 kDa separation system.



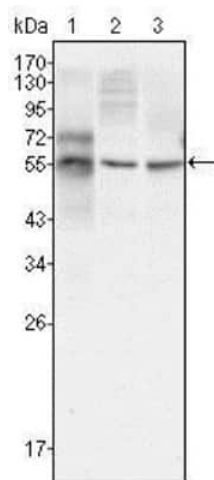
Immunocytochemistry/Immunofluorescence:
beta-III Tubulin Antibody (2E9) TA336754 -
Analysis of PANC-1 cells using Tubulin Beta 3
mouse mAb (green). Blue: DRAQ5 fluorescent
DNA dye. Red: Actin filaments have been labeled
with Alexa Fluor-555 phalloidin.



Flow Cytometry: beta-III Tubulin Antibody (2E9)
TA336754 - Analysis of A549 cells using anti-
Tubulin Beta 3 mAb (green) and negative control
(purple).



Immunocytochemistry/Immunofluorescence:
beta-III Tubulin Antibody (2E9) TA336754 -
Confocal analysis of SHSY5Y cells using Tubulin
Beta 3 antibody (TA336754, 1:5). An Alexa Fluor
488-conjugated Goat to mouse IgG was used as
secondary antibody (green). Actin filaments were
labeled with Alexa Fluor 568 phalloidin (red).
DAPI was used to stain the cell nuclei (blue).



Western Blot: beta-III Tubulin Antibody (2E9) TA336754 - Analysis of Tubulin Beta 3 mouse mAb against (1) HepG2, (2) A549, and (3) HeLa cell lysates.