

Product datasheet for **TA336537**

Dynamin 1 (DNM1) Mouse Monoclonal Antibody [Clone ID: 3G4B6]

Product data:

Product Type:	Primary Antibodies
Clone Name:	3G4B6
Applications:	ELISA, FC, IHC, IP, Simple Western, WB
Recommended Dilution:	Immunohistochemistry-Paraffin: 1:200- 1:1000, Immunohistochemistry-Frozen: 1:200- 1:1000, ELISA: 1:10000, Immunohistochemistry: 1:10-1:500, Simple Western: 1:50, Flow Cytometry: 1 ug per million cells, Western Blot: 1:500- 1:2000, Knockout Validated, Immunoprecipitation
Reactivity:	Human
Host:	Mouse
Isotype:	IgG2a
Clonality:	Monoclonal
Immunogen:	Purified recombinant fragment of human Dynamin expressed in E. coli. [UniProt# Q05193]
Formulation:	Preservative: 0.05% Sodium Azide. Aliquot and store at -20C or -80C. Avoid freeze-thaw cycles.
Concentration:	lot specific
Purification:	Ascites
Conjugation:	Unconjugated
Storage:	Store at -20°C as received.
Stability:	Stable for 12 months from date of receipt.
Predicted Protein Size:	97 kDa
Gene Name:	dynamin 1
Database Link:	NP_004399 Entrez Gene 1759 Human Q05193



[View online »](#)

Background:

Dynamamin (Dynamamin-1, Dyn1), with 864-amino acid protein (about 95kDa), belongs to the dynamamin family. Dynamamin (neuron-specific), Dynamamin-2 (ubiquitously expressed), and Dynamamin-3 (expressed only in the testis, brain, and lung), constitute the dynamamin family. Members of the dynamamin family are GPTase, microtubule-associated proteins which are involved in endocytosis, synaptic transmission and neurogenesis. Dynamamin is phosphorylated in nerve terminals exclusively in the cytosolic compartment and in vitro by protein kinase C. Dynamamin is a large GTPase enzyme required in membrane constriction and fission during multiple forms of endocytosis. Dynamamin is also a key molecule required for the recycling of synaptic vesicles in neurons, and it has been known that Dynamamin gene expression is induced during neuronal differentiation.

Synonyms:

DNM

Note:

This Dynamamin (3G4B6) antibody is useful for Western Blot, Immunohistochemistry on paraffin-embedded sections and ELISA.

Protein Families:

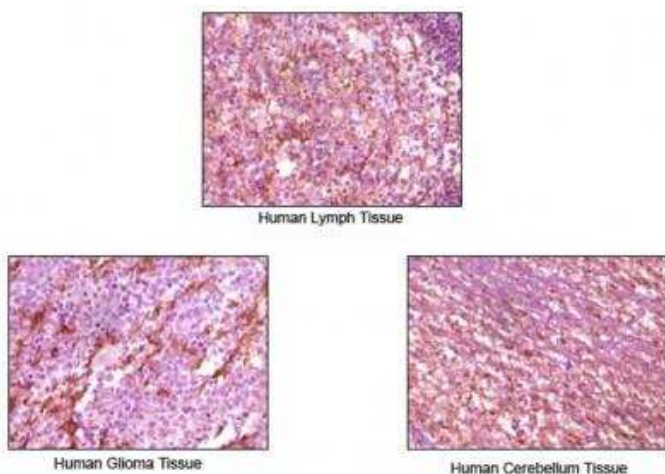
Druggable Genome

Protein Pathways:

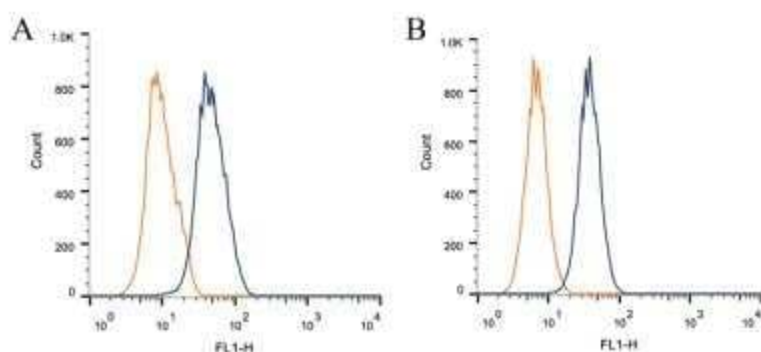
Endocytosis, Fc gamma R-mediated phagocytosis

Product images:

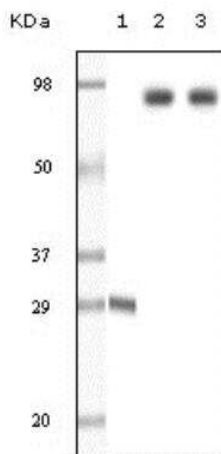
Simple Western: Dynamamin Antibody (3G4B6) TA336537 - Simple Western lane view shows a specific band for Dynamamin in 0.5 mg/ml of NIH-3T3 lysate. This experiment was performed under reducing conditions using the 12-230 kDa separation system.



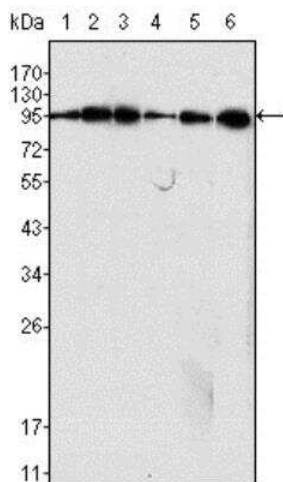
Immunohistochemistry-Paraffin: Dynamin Antibody (3G4B6) TA336537 - Immunohistochemical analysis of paraffin-embedded human Lymph tissue, glioma tissue and cerebellum tissue, showing membrane localization using Dynamin antibody with DAB staining.



Flow Cytometry: Dynamin Antibody (3G4B6) TA336537 - Intracellular flow cytometric staining of 1×10^6 CHO (A) and HEK-293 (B) cells using Dynamin antibody (dark blue). Isotype control shown in orange. An antibody concentration of $1 \mu\text{g}/1 \times 10^6$ cells was used.



Western Blot: Dynamin Antibody (3G4B6) TA336537 - Western blot analysis using anti-Dynamin monoclonal antibody against truncated Dynamin recombinant protein (1), SK-N-SH (2) and NIH3T3 (3) cell lysate.



Western Blot: Dynamin Antibody (3G4B6) TA336537 - Western blot analysis using Dynamin mouse mAb against C6 (1), NIH/3T3 (2), SKN-SH (3), LN18 (4), SHSY5Y (5) cell lysate and rat brain tissues lysate (6).