

Product datasheet for **TA336516**

CD11b (ITGAM) Rabbit Polyclonal Antibody

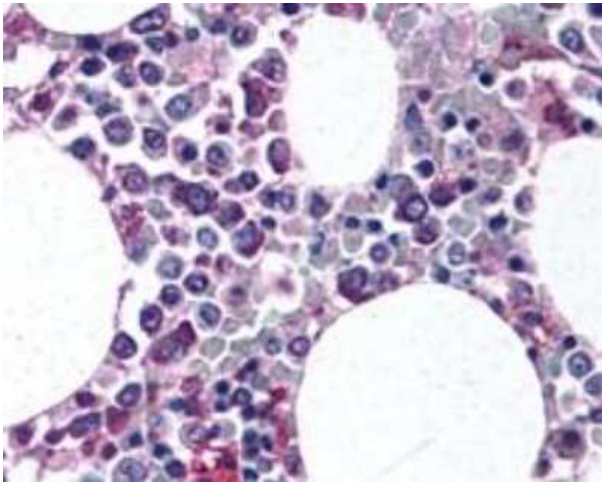
Product data:

Product Type:	Primary Antibodies
Applications:	FC, ICC/IF, IHC, WB
Recommended Dilution:	Flow Cytometry: 1:50 - 1:200, Immunocytochemistry/ Immunofluorescence: 1:50-1:200, Immunohistochemistry: 5-10 ug/ml, Immunohistochemistry-Paraffin: 5-10 ug/ml, Western Blot: 2-4 ug/ml, Immunohistochemistry-Frozen
Reactivity:	Human, Mouse
Host:	Rabbit
Clonality:	Polyclonal
Immunogen:	A synthetic peptide made to an internal region (within residues 500-600) of the mouse CD11 (b/c) protein. [Swiss-Prot# P05555]
Formulation:	Tris-glycine, 150 mM NaCl, 0.05% Sodium Azide. Aliquot and store at -20C or -80C. Avoid freeze-thaw cycles.
Concentration:	lot specific
Purification:	Immunogen affinity purified
Conjugation:	Unconjugated
Storage:	Store at -20°C as received.
Stability:	Stable for 12 months from date of receipt.
Predicted Protein Size:	160 kDa
Gene Name:	integrin subunit alpha M
Database Link:	NP_000623 Entrez Gene 16409 Mouse Entrez Gene 3684 Human P11215

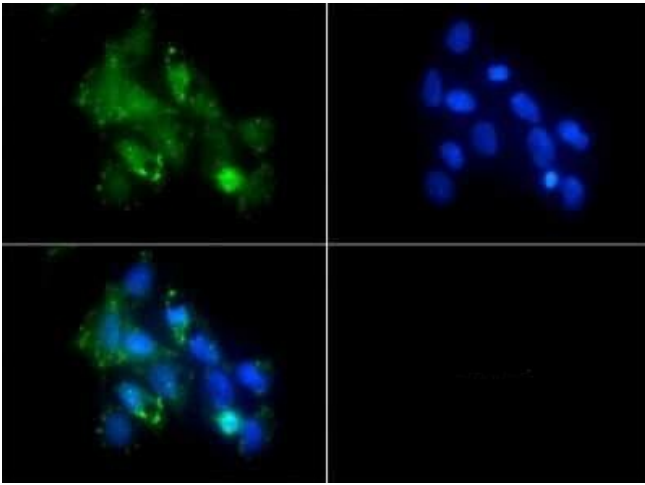


[View online »](#)

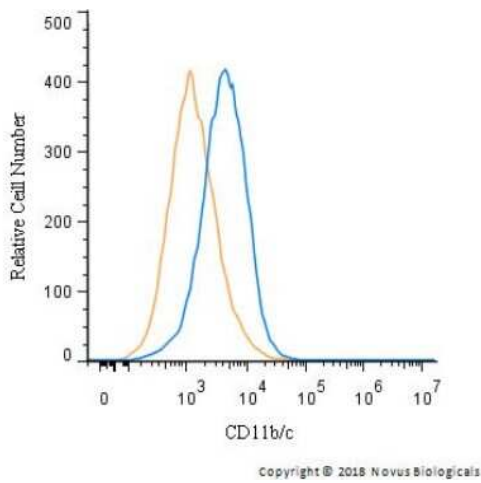
Background:	CD11b is implicated in various adhesive interactions of monocytes, macrophages and granulocytes as well as in mediating the uptake of complement coated particles. It is identical to CR3, the receptor for the iC3b fragment of the third complement component. It probably recognizes the RGD peptide in C3b. CD11b is also a receptor for fibrinogen, factor X and ICAM1. It recognizes P1 and P2 peptides of fibrinogen gamma chain. The Mac1 CD11b antigen is present on macrophages, granulocytes, natural killer cells, blood monocytes. CD11b is expressed on 8% spleen cells, 44% bone marrow cells and less than 1% of thymocytes and is commonly used as a microglial marker in nervous tissue.
Synonyms:	CD11B; CR3A; MAC-1; MAC1A; MO1A; SLEB6
Note:	This CD11b/c antibody is useful for Immunocytochemistry/Immunofluorescence, Western Blot, Immunohistochemistry paraffin embedded sections and Flow Cytometry. In Western blot a specific band is observed ~ 160 kDa and an apparant non-specific band is observed ~ 60 kDa. Prior to immunostaining paraffin tissues, antigen retrieval with citrate buffer (pH 6.0) is recommended. In ICC/IF, membrane staining was observed in Raw 264.7 cells.
Protein Families:	Druggable Genome, ES Cell Differentiation/IPS, Transmembrane
Protein Pathways:	Cell adhesion molecules (CAMs), Hematopoietic cell lineage, Leukocyte transendothelial migration, Regulation of actin cytoskeleton

Product images:

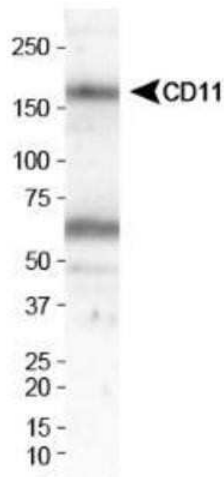
Immunohistochemistry: CD11b/c Antibody - BSA Free TA336516 - Staining of human bone marrow, myeloid precursors.



Immunocytochemistry/Immunofluorescence: CD11b/c Antibody - BSA Free TA336516 - CD11 antibody was tested in Raw264.7 cells with FITC (green). Nuclei were counterstained with DAPI (blue).



Flow Cytometry: CD11b/c Antibody - BSA Free TA336516 - A surface stain was performed on RAW 264.7 with TA336516 and a matched isotype control. Cells were incubated in an antibody dilution of 2.5 ug/mL for 30 minutes at room temperature, followed by Rabbit IgG (H+L) Cross-Adsorbed Secondary Antibody, DyLight 550.



Western Blot: CD11b/c Antibody - BSA Free TA336516 - Analysis of CD11b/c in Raw 264.7 whole cell lysate.