

Product datasheet for **TA336484**

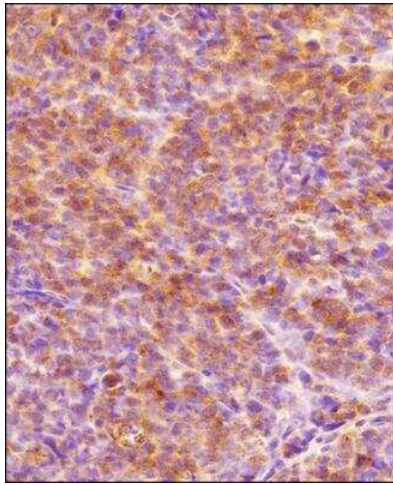
HIF-1 alpha (HIF1A) Rabbit Polyclonal Antibody

Product data:

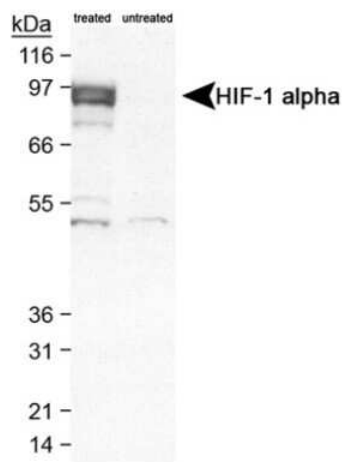
Product Type:	Primary Antibodies
Applications:	ICC/IF, IHC, Simple Western, WB
Recommended Dilution:	Knockdown Validated, Immunocytochemistry/ Immunofluorescence: 1:10 - 1:500, Immunohistochemistry-Paraffin: 1:100 - 1:300, Immunohistochemistry-Frozen: 1:100 - 1:300, Western Blot: 1:1000, Simple Western: 1:100, Immunohistochemistry: 1:100 - 1:300, Gel Super Shift Assays
Reactivity:	Human, Mouse, Rat, Porcine
Host:	Rabbit
Clonality:	Polyclonal
Immunogen:	Fusion protein containing amino acids 432-528 of human HIF-1 alpha [UniProt# Q16665]
Formulation:	PBS, 0.01% Sodium Azide. Aliquot and store at -20C or -80C. Avoid freeze-thaw cycles.
Concentration:	lot specific
Purification:	Immunogen affinity purified
Conjugation:	Unconjugated
Storage:	Store at -20°C as received.
Stability:	Stable for 12 months from date of receipt.
Gene Name:	hypoxia inducible factor 1 alpha subunit
Database Link:	NP_851397 Entrez Gene 15251 Mouse Entrez Gene 29560 Rat Entrez Gene 3091 Human Q16665



[View online »](#)



Immunohistochemistry-Paraffin: HIF-1 alpha Antibody TA336484 - IHC analysis of a formalin-fixed paraffin-embedded tissue section of human endometrium carcinoma AN3CA cell line based xenograft using rabbit polyclonal HIF-1 alpha antibody TA336484 at 1:300 dilution. The signal was developed using HRP-labelled secondary antibody and DAB reagent, and the section was further counterstained using hematoxylin. The tested section depicted mainly a diffused cytoplasmic staining but there were some cells which showed nuclear signal also (representing hypoxic cells).



Western Blot: HIF-1 alpha Antibody TA336484 - Detection of HIF-1 alpha in cobalt chloride treated/untreated COS-7 nuclear extracts using TA336484.