

Product datasheet for **TA336481**

PINK1 Rabbit Polyclonal Antibody

Product data:

Product Type:	Primary Antibodies
Applications:	WB
Recommended Dilution:	WB: 1:100-1:2000
Reactivity:	Human
Host:	Rabbit
Clonality:	Polyclonal
Immunogen:	A synthetic peptide made residues 258-274 (YRKSKRGPQLAPHPNI) of human PINK1.
Formulation:	PBS, 0.02% Sodium Azide. Store at 4C short term. Aliquot and store at -20C long term. Avoid freeze-thaw cycles.
Concentration:	lot specific
Purification:	Immunogen affinity purified
Conjugation:	Unconjugated
Storage:	Store at -20°C as received.
Stability:	Stable for 12 months from date of receipt.
Predicted Protein Size:	64 kDa
Gene Name:	PTEN induced putative kinase 1
Database Link:	NP_115785 Entrez Gene 65018 Human Q9BXM7
Background:	Mutations in the PTEN-induced kinase (PINK1) gene located within the PARK6 locus on chromosome 1p35-p36 have recently been identified in patients with recessive early-onset Parkinson disease. Data suggests that PINK1 may be the second most common causative gene next to parkin in parkinsonism with the recessive mode of inheritance.
Synonyms:	BRPK; PARK6
Note:	Western blot - Use at 1:500 to 1:1,000 dilution. This antibody has only been tested on transfected lysates. Endogenous protein detection is unknown. No other applications have been tested.

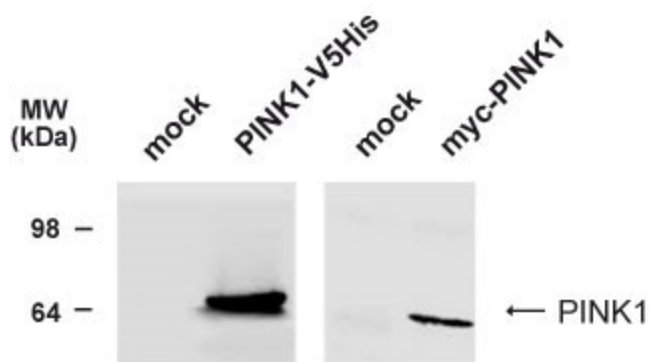


[View online »](#)

Protein Families: Druggable Genome, Protein Kinase

Protein Pathways: Parkinson's disease

Product images:



Western Blot: PINK1 Antibody TA336481 - Analysis of C-terminally V5His-tagged human PINK1 or N-terminally myc-tagged human PINK1 expressed in HEK293T cells using TA336481 at 1:1000 dilution.