

Product datasheet for **TA336405**

TLR4 Rat Monoclonal Antibody [Clone ID: MTS510]

Product data:

Product Type:	Primary Antibodies
Clone Name:	MTS510
Applications:	FC, ICC/IF, IP
Recommended Dilution:	Immunocytochemistry/ Immunofluorescence, Flow Cytometry: 1-2 ug/10 ⁶ cells, Flow (Cell Surface): 1 - 2 ug / 10 ⁶ cells, Immunoprecipitation: 1:10-1:500
Reactivity:	Mouse
Host:	Rat
Isotype:	IgG2a, kappa
Clonality:	Monoclonal
Immunogen:	This antibody was developed by immunizing rats with the Ba/F3 cell line expressing mouse TLR4 and MD-2 (Akashi et al, 2000).
Formulation:	PBS containing 0.05% BSA, 0.05% Sodium Azide. Store at 4C short term. Aliquot and store at -20C long term. Avoid freeze-thaw cycles.
Concentration:	lot specific
Purification:	Protein G purified
Conjugation:	Unconjugated
Storage:	Store at -20°C as received.
Stability:	Stable for 12 months from date of receipt.
Gene Name:	toll like receptor 4
Database Link:	NP_612564 Entrez Gene 21898 Mouse O00206



[View online »](#)

Background:

The Toll-like receptor (TLR) family in mammal comprises a family of transmembrane proteins characterized by multiple copies of leucine rich repeats in the extracellular domain and IL-1 receptor motif in the cytoplasmic domain. Like its counterparts in *Drosophila*, TLRs signal through adaptor molecules. The TLR family is a phylogenetically conserved mediator of innate immunity that is essential for microbial recognition. Ten human homologs of TLRs (TLR1-10) have been described. Among this family of receptors, TLR2 and TLR4 have been most studied. These studies have suggested that TLR2 and TLR4 may serve as potential main mediators of LPS signaling. The mouse TLR4 cDNA codes for a protein consisting of 835 amino acids with approximate molecular weight of 90 kDa.

Synonyms:

ARMD10; CD284; TLR-4; TOLL

Note:

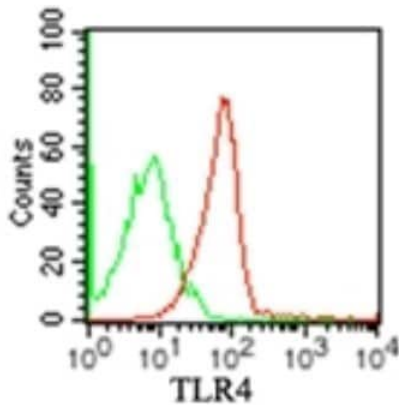
Immunoprecipitation: Please see Akashi et al (2000) for details

Protein Families:

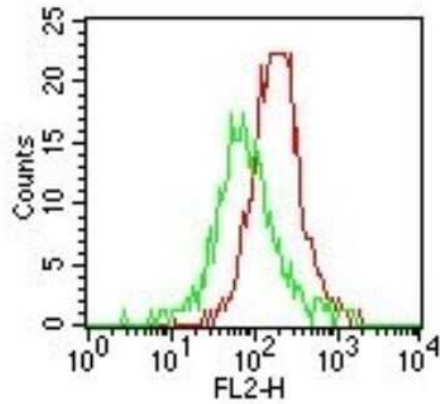
Druggable Genome, Transmembrane

Protein Pathways:

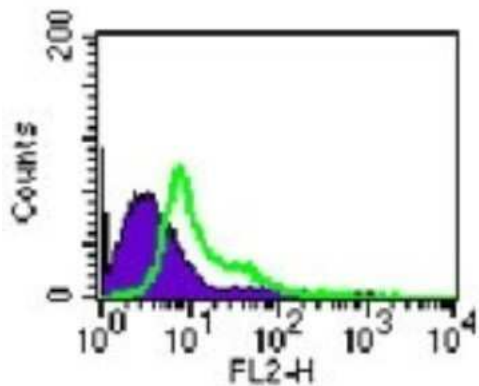
Pathogenic *Escherichia coli* infection, Toll-like receptor signaling pathway

Product images:

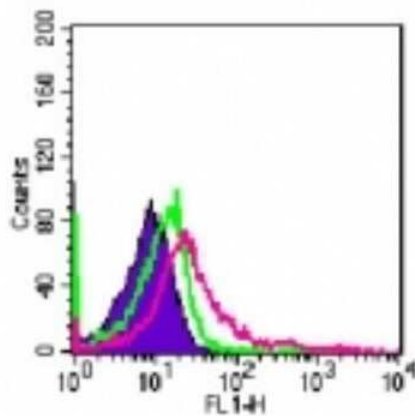
Flow (Cell Surface): TLR4 Antibody (MTS510) TA336405 - Analysis using Azide/BSA FREE version of NBP2-24865. Cell surface analysis of TLR4 on mouse RAW cells using 0.5 ug/10⁶ cells of TLR4 antibody, anti-rat APC conjugated secondary antibody and cell surface flow kit. Green: isotype control. Red: TLR4 antibody.



Flow Cytometry: TLR4 Antibody (MTS510) TA336405 - Analysis using Azide Free version of TA336405. Cell surface TLR4 in mouse peritoneal cells. Green: isotype control. Red: anti-TLR4 antibody.



Flow Cytometry: TLR4 Antibody (MTS510) TA336405 - Analysis using the PE conjugate of NBP2-24865. Staining of cell surface TLR4 using this antibody at 0.625 ug/10⁶ Raw cells (pretreated with anti-CD16/32). Shaded histogram: isotype control.



Flow Cytometry: TLR4 Antibody (MTS510) TA336405 - Analysis using the FITC conjugate of NBP2-24865. Staining of TLR4 in mouse peritoneal cells using 1 ug of this antibody. Shaded histogram: Cells without antibody; green represents isotype control; red represents anti-TLR4 antibody.