

## Product datasheet for **TA336363**

### SMAD2 Rabbit Polyclonal Antibody

#### Product data:

Product Type:	Primary Antibodies
Applications:	IHC, WB
Recommended Dilution:	Immunohistochemistry, Immunohistochemistry-Paraffin: 5 ug/ml, Western Blot: 2-4 ug/ml
Reactivity:	Human, Mouse, Rat, Bovine, Canine, Chicken, Primate
Host:	Rabbit
Clonality:	Polyclonal
Immunogen:	Amino acids 234-249 (DQQLNQSMDTGSPAEL) of human SMAD2 protein was used as the immunogen.
Formulation:	PBS containing 0.05% BSA, 0.05% Sodium Azide. Store at 4C. Do not freeze.
Concentration:	lot specific
Purification:	Protein G purified
Conjugation:	Unconjugated
Storage:	Store at -20°C as received.
Stability:	Stable for 12 months from date of receipt.
Gene Name:	SMAD family member 2
Database Link:	<a href="#">NP_001003652</a> <a href="#">Entrez Gene 17126 Mouse</a> <a href="#">Entrez Gene 29357 Rat</a> <a href="#">Entrez Gene 4087 Human</a> <a href="#">Q15796</a>

**Background:** SMAD2 is an intracellular protein belonging to the Dwarfin (DWA/B)/SMAD family. SMAD2 associates with SMAD4 for translocation to nucleus. It acts as an intracellular mediator of TGFbeta family of cytokines and activin type 1 receptor (ACVR1C). Hence it regulates multiple cellular processes like cell growth, proliferation, differentiation, and apoptosis and also cooperates with transcription factors to regulate expression of defined genes. Apart from playing an important role in TGFbeta1-induced CTGF expression they also act as markers of EMT in human PTECs. It also acts as an integrator of multiple signals in the regulation of NOS3 expression. It is ubiquitously expressed in most of the tissues and is responsible for colorectal, hepatocellular, lung and breast carcinomas as well as cervical cancer.

**Synonyms:** hMAD-2; hSMAD2; JV18; JV18-1; MADH2; MADR2

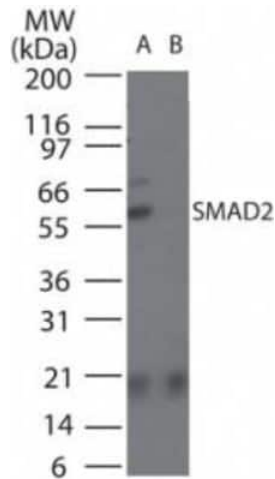


[View online »](#)

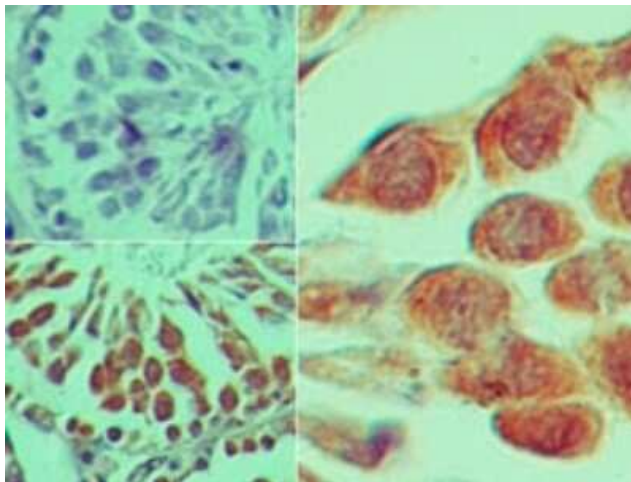
**Protein Families:** Cancer stem cells, Druggable Genome, Embryonic stem cells, ES Cell Differentiation/IPS, Stem cell relevant signaling - JAK/STAT signaling pathway, Stem cell relevant signaling - TGFb/BMP signaling pathway, Transcription Factors

**Protein Pathways:** Adherens junction, Cell cycle, Colorectal cancer, Pancreatic cancer, Pathways in cancer, TGF-beta signaling pathway, Wnt signaling pathway

**Product images:**



Western Blot: Smad2 Antibody TA336363 - Lysate from rat muscle in the 1) absence and 2) presence of immunizing peptide probed with this antibody at 3 ug/ml.



Immunohistochemistry-Paraffin: Smad2 Antibody TA336363 - Mouse testis tissue probed with this antibody at 5 ug/ml.