

## Product datasheet for TA336111

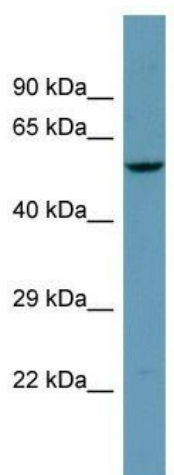
### ANO9 Rabbit Polyclonal Antibody

#### Product data:

Product Type:	Primary Antibodies
Applications:	WB
Recommended Dilution:	WB
Reactivity:	Human
Host:	Rabbit
Isotype:	IgG
Clonality:	Polyclonal
Immunogen:	The immunogen for Anti-ANO9 Antibody is: synthetic peptide directed towards the middle region of Human ANO9. Synthetic peptide located within the following region: AIIIMGLKQTLNSNCVEYLVPPWVTHKCRSLRAESGHLPRDPELRDWRNYL
Formulation:	Liquid. Purified antibody supplied in 1x PBS buffer with 0.09% (w/v) sodium azide and 2% sucrose. <i>Note that this product is shipped as lyophilized powder to China customers.</i>
Purification:	Affinity Purified
Conjugation:	Unconjugated
Storage:	Store at -20°C as received.
Stability:	Stable for 12 months from date of receipt.
Predicted Protein Size:	53 kDa
Gene Name:	anoctamin 9
Database Link:	<a href="#">NP_001012302</a> <a href="#">Entrez Gene 338440 Human</a> <a href="#">A1A5B4</a>
Background:	ANO9 does not exhibit calcium-activated chloride channel (CaCC) activity. It can inhibit the activity of ANO1.
Synonyms:	PIG5; TMEM16J; TP53I5
Note:	Immunogen Sequence Homology: Human: 100%
Protein Families:	Druggable Genome, Transmembrane



[View online »](#)

**Product images:**

Host: Rabbit; Target Name: ANO9; Sample Tissue: PANC1 Whole Cell lysates; Antibody Dilution: 1.0 ug/ml