

Product datasheet for **TA336082**

Aurora C (AURKC) Rabbit Polyclonal Antibody

Product data:

Product Type:	Primary Antibodies
Applications:	WB
Recommended Dilution:	WB
Reactivity:	Human
Host:	Rabbit
Isotype:	IgG
Clonality:	Polyclonal
Immunogen:	The immunogen for Anti-AURKC Antibody: synthetic peptide directed towards the middle region of human AURKC. Synthetic peptide located within the following region: TYDEKVDLWCIGVLCYELLVGYPFESASHSETYRRILKVDVRFPLSMPL
Formulation:	Liquid. Purified antibody supplied in 1x PBS buffer with 0.09% (w/v) sodium azide and 2% sucrose. <i>Note that this product is shipped as lyophilized powder to China customers.</i>
Purification:	Affinity Purified
Conjugation:	Unconjugated
Storage:	Store at -20°C as received.
Stability:	Stable for 12 months from date of receipt.
Predicted Protein Size:	34 kDa
Gene Name:	aurora kinase C
Database Link:	NP_001015878 Entrez Gene 6795 Human Q9UQB9



[View online »](#)

Background:

AURKC may play a part in organizing microtubules in relation to the function of the centrosome/spindle pole during mitosis. This gene encodes a member of the Aurora subfamily of serine/threonine protein kinases. The encoded protein is a chromosomal passenger protein that forms complexes with Aurora-B and inner centromere proteins and may play a role in organizing microtubules in relation to centrosome/spindle function during mitosis. This gene is overexpressed in several cancer cell lines, suggesting an involvement in oncogenic signal transduction. Alternative splicing results in multiple transcript variants.

Synonyms:

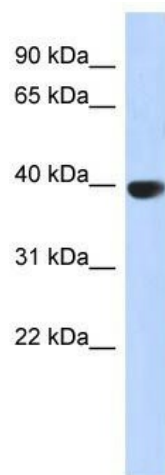
AIE2; AIK3; ARK3; AurC; aurora-C; HEL-S-90; SPGF5; STK13

Note:

Immunogen Sequence Homology: Rat: 100%; Human: 100%; Dog: 93%; Pig: 93%; Horse: 93%; Mouse: 93%; Bovine: 93%; Rabbit: 93%; Guinea pig: 93%; Goat: 79%; Zebrafish: 79%

Protein Families:

Druggable Genome, Protein Kinase

Product images:

WB Suggested Anti-AURKC Antibody Titration:
0.2-1 ug/ml; ELISA Titer: 1: 62500; Positive
Control: Human Pancreas