

Product datasheet for TA335747

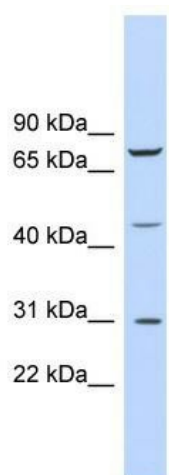
EGR3 Rabbit Polyclonal Antibody

Product data:

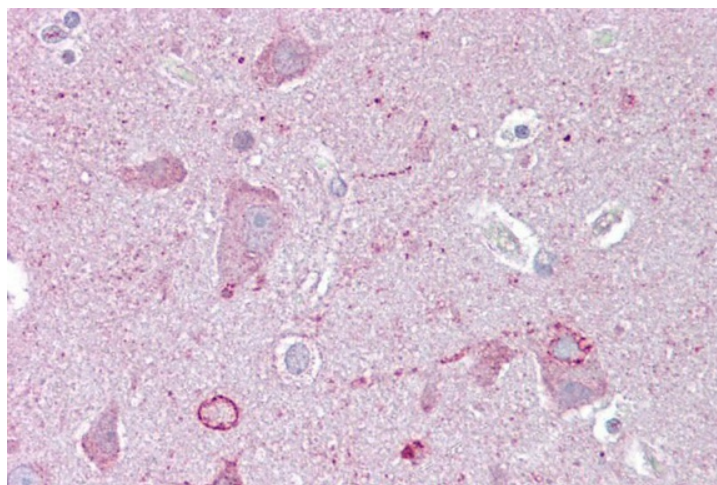
Product Type:	Primary Antibodies
Applications:	IHC, WB
Recommended Dilution:	WB, IHC
Reactivity:	Human
Host:	Rabbit
Isotype:	IgG
Clonality:	Polyclonal
Immunogen:	The immunogen for Anti-EGR3 Antibody: synthetic peptide directed towards the middle region of human EGR3. Synthetic peptide located within the following region: HIRHTGEEKPFACEFCGRKFARSDERKRHAKIHLKQKEKKAKEGGAPSAS
Formulation:	Liquid. Purified antibody supplied in 1x PBS buffer with 0.09% (w/v) sodium azide and 2% sucrose. <i>Note that this product is shipped as lyophilized powder to China customers.</i>
Purification:	Affinity Purified
Conjugation:	Unconjugated
Storage:	Store at -20°C as received.
Stability:	Stable for 12 months from date of receipt.
Predicted Protein Size:	42 kDa
Gene Name:	early growth response 3
Database Link:	NP_004421 Entrez Gene 1960 Human Q06889
Background:	EGR3 is a probable transcription factor involved in muscle spindle development.
Synonyms:	EGR-3; PILOT
Note:	Immunogen Sequence Homology: Dog: 100%; Pig: 100%; Rat: 100%; Horse: 100%; Human: 100%; Bovine: 100%; Rabbit: 100%; Guinea pig: 100%; Mouse: 93%; Sheep: 77%; Zebrafish: 77%



[View online »](#)

Product images:

WB Suggested Anti-EGR3 Antibody Titration: 0.2-1 ug/ml; ELISA Titer: 1:62500; Positive Control: 721_B cell lysate



Immunohistochemistry with Brain, cortex tissue at an antibody concentration of 5 ug/ml using anti-EGR3 antibody