

Product datasheet for **TA335740**

ASH2L Rabbit Polyclonal Antibody

Product data:

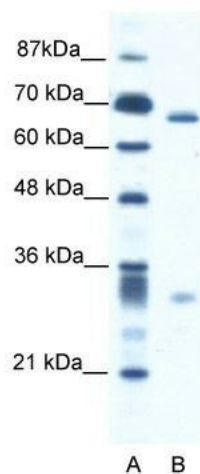
Product Type:	Primary Antibodies
Applications:	IHC, WB
Recommended Dilution:	WB, IHC
Reactivity:	Human
Host:	Rabbit
Isotype:	IgG
Clonality:	Polyclonal
Immunogen:	The immunogen for Anti-ASH2L Antibody: synthetic peptide directed towards the N terminal of human ASH2L. Synthetic peptide located within the following region: EPSSGEAEGGEANLVDVSGGLETSSNGKDTLEGAGDTSEVMDTQAGSVD
Formulation:	Liquid. Purified antibody supplied in 1x PBS buffer with 0.09% (w/v) sodium azide and 2% sucrose. <i>Note that this product is shipped as lyophilized powder to China customers.</i>
Purification:	Protein A purified
Conjugation:	Unconjugated
Storage:	Store at -20°C as received.
Stability:	Stable for 12 months from date of receipt.
Predicted Protein Size:	69 kDa
Gene Name:	ASH2 like histone lysine methyltransferase complex subunit
Database Link:	NP_004665 Entrez Gene 9070 Human Q9UBL3
Background:	ASH2L plays a role in hematopoiesis and is associated with some special kinds of leukemia. The amount of ASH2L transcripts is extremely high in fetal liver, testis, and leukemia cell lines with erythroid and megakaryocytic potential.
Synonyms:	ASH2; ASH2L1; ASH2L2; Bre2
Note:	Immunogen Sequence Homology: Dog: 100%; Pig: 100%; Rat: 100%; Horse: 100%; Human: 100%; Bovine: 100%; Guinea pig: 100%; Mouse: 93%



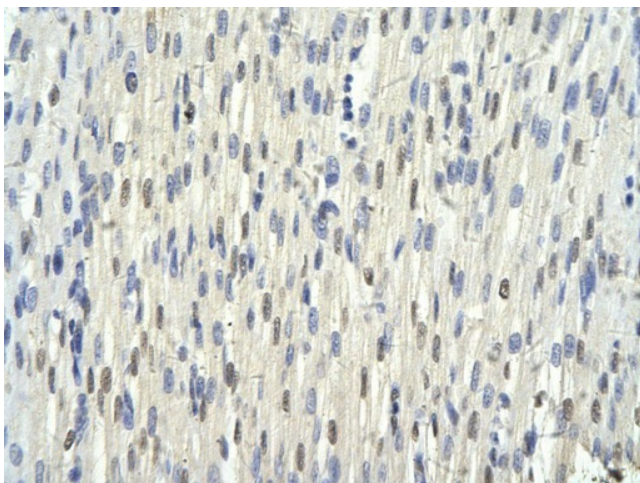
[View online »](#)

Protein Families: Druggable Genome, Transcription Factors

Product images:



WB Suggested Anti-ASH2L Antibody; Titration: 2.5 ug/ml; Positive Control: Jurkat Whole Cell; ASH2L is supported by BioGPS gene expression data to be expressed in Jurkat



Rabbit Anti-ASH2L antibody; Paraffin Embedded Tissue: Human Heart cell; Cellular Data: Epithelial cells of renal tubule; Antibody Concentration: 4.0-8.0 ug/ml; Magnification: 400X