

## Product datasheet for **TA335600**

### CoREST (RCOR1) Rabbit Polyclonal Antibody

#### Product data:

Product Type:	Primary Antibodies
Applications:	IHC, WB
Recommended Dilution:	WB
Reactivity:	Human
Host:	Rabbit
Isotype:	IgG
Clonality:	Polyclonal
Immunogen:	The immunogen for Anti-RCOR1 Antibody: synthetic peptide directed towards the middle region of human RCOR1. Synthetic peptide located within the following region: DEVLQEWEAEHGKEETNGPSNQPKVSPDNSIKMPEEEDAPVLDVRYAS
Formulation:	Liquid. Purified antibody supplied in 1x PBS buffer with 0.09% (w/v) sodium azide and 2% sucrose. <i>Note that this product is shipped as lyophilized powder to China customers.</i>
Purification:	Affinity Purified
Conjugation:	Unconjugated
Storage:	Store at -20°C as received.
Stability:	Stable for 12 months from date of receipt.
Predicted Protein Size:	53 kDa
Gene Name:	REST corepressor 1
Database Link:	<a href="#">NP_055971</a> <a href="#">Entrez Gene 23186 Human</a> <a href="#">Q9UKL0</a>
Background:	RCOR1 is a functional corepressor required for regulation of neural-specific gene expression. The RCOR gene encodes a functional corepressor required for regulation of neural-specific gene expression. The RCOR gene encodes a functional corepressor required for regulation of neural-specific gene expression. [supplied by OMIM]. Publication Note: This RefSeq record includes a subset of the publications that are available for this gene. Please see the Entrez Gene record to access additional publications.



[View online »](#)

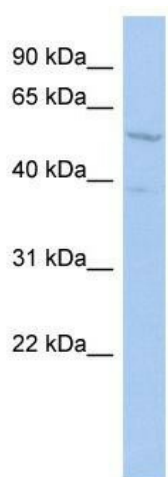
**Synonyms:** COREST; RCOR

**Note:** Immunogen Sequence Homology: Pig: 100%; Human: 100%; Guinea pig: 100%; Bovine: 93%; Horse: 92%; Dog: 86%; Mouse: 86%; Rat: 79%

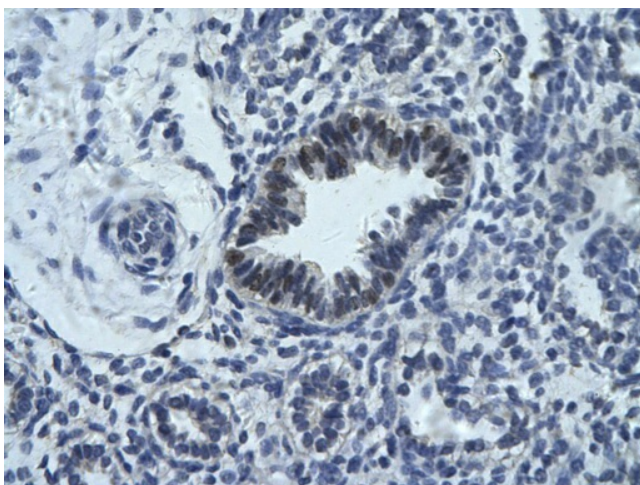
**Protein Families:** Transcription Factors

**Protein Pathways:** Huntington's disease

**Product images:**



WB Suggested Anti-RCOR1 Antibody Titration: 0.2-1 ug/ml; ELISA Titer: 1:62500; Positive Control: HT1080 cell lysate RCOR1 is supported by BioGPS gene expression data to be expressed in HT1080



Rabbit Anti-RCOR1 Antibody; Paraffin Embedded Tissue: Human bronchiole epithelium; Cellular Data: Epithelial cells of renal tubule; Antibody Concentration: 4.0-8.0 ug/ml; Magnification: 400X