

## Product datasheet for **TA335568**

### VPS24 (CHMP3) Rabbit Polyclonal Antibody

#### Product data:

Product Type:	Primary Antibodies
Applications:	WB
Recommended Dilution:	WB
Reactivity:	Human
Host:	Rabbit
Isotype:	IgG
Clonality:	Polyclonal
Immunogen:	The immunogen for Anti-VPS24 Antibody: synthetic peptide directed towards the N terminal of human VPS24. Synthetic peptide located within the following region: RVVDRQIRDIQREEEKVKRSVKDAAKKGQKDVCIVLAKEMIRSRKAVSKL
Formulation:	Liquid. Purified antibody supplied in 1x PBS buffer with 0.09% (w/v) sodium azide and 2% sucrose. <i>Note that this product is shipped as lyophilized powder to China customers.</i>
Purification:	Affinity Purified
Conjugation:	Unconjugated
Storage:	Store at -20°C as received.
Stability:	Stable for 12 months from date of receipt.
Predicted Protein Size:	25 kDa
Gene Name:	charged multivesicular body protein 3
Database Link:	<a href="#">NP_057163</a> <a href="#">Entrez Gene 51652 Human</a> <a href="#">Q9Y3E7</a>
Background:	VPS24 encodes a protein that acts in the sorting of transmembrane proteins into lysosomes/vacuoles via the multivesicular body (MVB) pathway. This protein, along with other soluble coiled-coil containing proteins, forms part of the ESCRT-III protein complex that binds to the endosomal membrane and recruits additional cofactors for protein sorting into the MVB. This protein may also co-immunoprecipitate with a member of the IFG-binding protein superfamily.



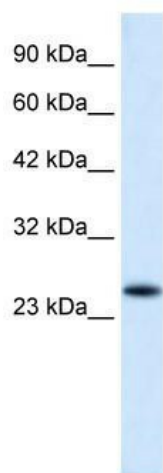
[View online »](#)

**Synonyms:** CGI-149; NEDF; VPS24

**Note:** Immunogen Sequence Homology: Dog: 100%; Pig: 100%; Rat: 100%; Human: 100%; Mouse: 100%; Bovine: 100%; Rabbit: 100%; Guinea pig: 100%; Zebrafish: 93%; Horse: 86%

**Protein Pathways:** Endocytosis

**Product images:**



WB Suggested Anti-VPS24 Antibody Titration: 0.2-1 ug/ml; ELISA Titer: 1:12500; Positive Control: HepG2 cell lysate