

Product datasheet for **TA335465**

Lin28 (LIN28A) Rabbit Polyclonal Antibody

Product data:

Product Type:	Primary Antibodies
Applications:	IHC, WB
Recommended Dilution:	WB, IHC
Reactivity:	Human
Host:	Rabbit
Isotype:	IgG
Clonality:	Polyclonal
Immunogen:	The immunogen for Anti-LIN28 Antibody: synthetic peptide directed towards the N terminal of human LIN28. Synthetic peptide located within the following region: GSVSNQQFAGGCAKAAEEAPEEDAARAADPQLLHGAGICKWFNVRM
Formulation:	Liquid. Purified antibody supplied in 1x PBS buffer with 0.09% (w/v) sodium azide and 2% sucrose. <i>Note that this product is shipped as lyophilized powder to China customers.</i>
Purification:	Affinity Purified
Conjugation:	Unconjugated
Storage:	Store at -20°C as received.
Stability:	Stable for 12 months from date of receipt.
Predicted Protein Size:	23 kDa
Gene Name:	lin-28 homolog A
Database Link:	NP_078950 Entrez Gene 79727 Human Q9H9Z2
Background:	LIN28 acts as a 'translational enhancer', driving specific mRNAs to polysomes and thus increasing the efficiency of protein synthesis. The association of LIN28 with the translational machinery and target mRNAs results in an increased number of initiation events per molecule of mRNA and, indirectly, in stabilizing the mRNAs. IT binds IGF2 mRNA, MYOD1 mRNA, ARBP/36B4 ribosomal protein mRNA and its own mRNA. LIN28 is Essential for skeletal muscle differentiation program through the translational up-regulation of IGF2 expression.



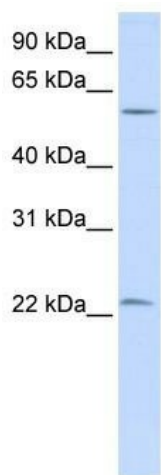
[View online »](#)

Synonyms: CSDD1; LIN-28; lin-28A; LIN28; ZCCHC1

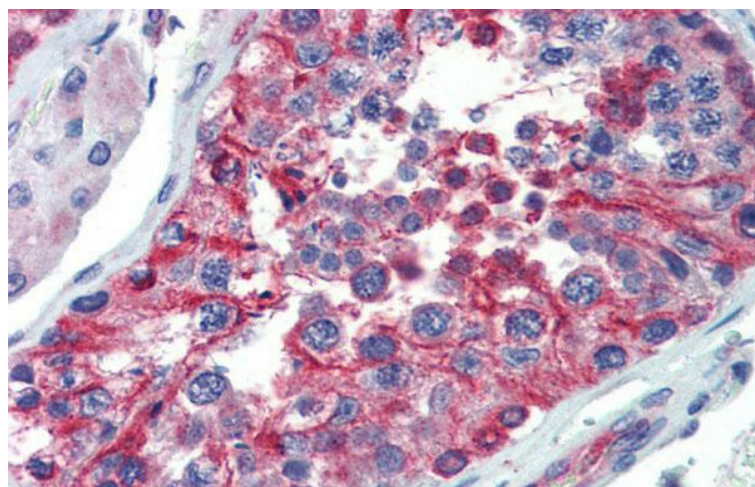
Note: Immunogen Sequence Homology: Dog: 100%; Pig: 100%; Rat: 100%; Human: 100%; Sheep: 100%; Bovine: 100%; Rabbit: 100%; Goat: 91%; Mouse: 90%; Guinea pig: 86%; Yeast: 77%

Protein Families: Transcription Factors

Product images:



WB Suggested Anti-LIN28 Antibody Titration: 0.2-1 ug/ml; ELISA Titer: 1:62500; Positive Control: Hela cell lysate



Immunohistochemistry with Human Testis lysate tissue at an antibody concentration of 5.0 ug/ml using anti-LIN28 antibody