

Product datasheet for **TA335390**

Lipin 1 (LPIN1) Rabbit Polyclonal Antibody

Product data:

Product Type:	Primary Antibodies
Applications:	IF, WB
Recommended Dilution:	WB, IF
Reactivity:	Human
Host:	Rabbit
Isotype:	IgG
Clonality:	Polyclonal
Immunogen:	The immunogen for Anti-LPIN1 Antibody: synthetic peptide directed towards the N terminal of human LPIN1. Synthetic peptide located within the following region: SLAVIYPQSASYPNSDREWSPTPSPSGSRPSTPKSDSELVSKSTERTGQK
Formulation:	Liquid. Purified antibody supplied in 1x PBS buffer with 0.09% (w/v) sodium azide and 2% sucrose. <i>Note that this product is shipped as lyophilized powder to China customers.</i>
Purification:	Affinity Purified
Conjugation:	Unconjugated
Storage:	Store at -20°C as received.
Stability:	Stable for 12 months from date of receipt.
Predicted Protein Size:	98 kDa
Gene Name:	lipin 1
Database Link:	NP_663731 Entrez Gene 23175 Human Q14693



[View online »](#)

Background:

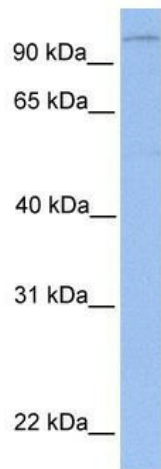
This gene represents a candidate gene for human lipodystrophy, characterized by loss of body fat, fatty liver, hypertriglyceridemia, and insulin resistance. Mouse studies suggest that LPIN1 functions during normal adipose tissue development and may also play a role in human triglyceride metabolism. This gene represents a candidate gene for human lipodystrophy, characterized by loss of body fat, fatty liver, hypertriglyceridemia, and insulin resistance. Mouse studies suggest that this gene functions during normal adipose tissue development and may also play a role in human triglyceride metabolism. Publication Note: This RefSeq record includes a subset of the publications that are available for this gene. Please see the Entrez Gene record to access additional publications.

Synonyms:

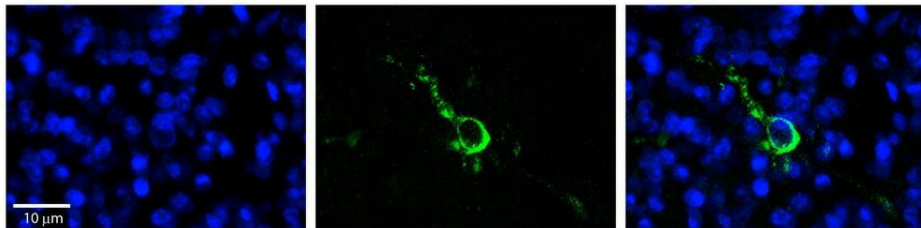
PAP1

Note:

Immunogen Sequence Homology: Dog: 100%; Rat: 100%; Horse: 100%; Human: 100%; Mouse: 100%; Rabbit: 100%; Pig: 93%; Sheep: 93%; Bovine: 93%; Yeast: 91%; Zebrafish: 91%; Guinea pig: 86%

Product images:


WB Suggested Anti-LPIN1 Antibody Titration: 0.2-1 ug/ml; Positive Control: 721_B cell lysate LPIN1 is strongly supported by BioGPS gene expression data to be expressed in Human 721_B cells



Rabbit Anti-LPIN1 Antibody; Formalin Fixed Paraffin Embedded Tissue: Human Pineal Tissue; Observed Staining: Cytoplasmic and membrane in cell bodies and processes of pinealocytes; Primary Antibody Concentration: 1: 100; Other Working Concentrations: 1/600; Secondary Antibody: Donkey anti-Rabbit-Cy3; Secondary Antibody Concentration: 1: 200; Magnification: 20X; Exposure Time: 0.5–2.0 sec;