

Product datasheet for **TA335200**

HIF-1 alpha (HIF1A) Rabbit Polyclonal Antibody

Product data:

Product Type:	Primary Antibodies
Applications:	WB
Recommended Dilution:	WB
Reactivity:	Human, Chicken, Mouse
Host:	Rabbit
Isotype:	IgG
Clonality:	Polyclonal
Immunogen:	The immunogen for anti-HIF1A antibody: synthetic peptide directed towards the middle region of human HIF1A. Synthetic peptide located within the following region: VKGCKSSEQNGMEQKTIILIPSDLACRLLGQSMDESGLPQLTSYDCEVNA
Formulation:	Liquid. Purified antibody supplied in 1x PBS buffer with 0.09% (w/v) sodium azide and 2% sucrose. <i>Note that this product is shipped as lyophilized powder to China customers.</i>
Purification:	Affinity Purified
Conjugation:	Unconjugated
Storage:	Store at -20°C as received.
Stability:	Stable for 12 months from date of receipt.
Predicted Protein Size:	93 kDa
Gene Name:	hypoxia inducible factor 1 alpha subunit
Database Link:	NP_001521 Entrez Gene 15251 Mouse Entrez Gene 3091 Human Q16665



[View online »](#)

Background:

This gene encodes the alpha subunit of transcription factor hypoxia-inducible factor-1 (HIF-1), which is a heterodimer composed of an alpha and a beta subunit. HIF-1 functions as a master regulator of cellular and systemic homeostatic response to hypoxia by activating transcription of many genes, including those involved in energy metabolism, angiogenesis, apoptosis, and other genes whose protein products increase oxygen delivery or facilitate metabolic adaptation to hypoxia. HIF-1 thus plays an essential role in embryonic vascularization, tumor angiogenesis and pathophysiology of ischemic disease. Alternatively spliced transcript variants encoding different isoforms have been identified for this gene. [provided by RefSeq, Jul 2011]

Synonyms:

bHLHe78; HIF-1-alpha; HIF-1A; HIF-1alpha; HIF1; HIF1-ALPHA; MOP1; PASD8

Note:

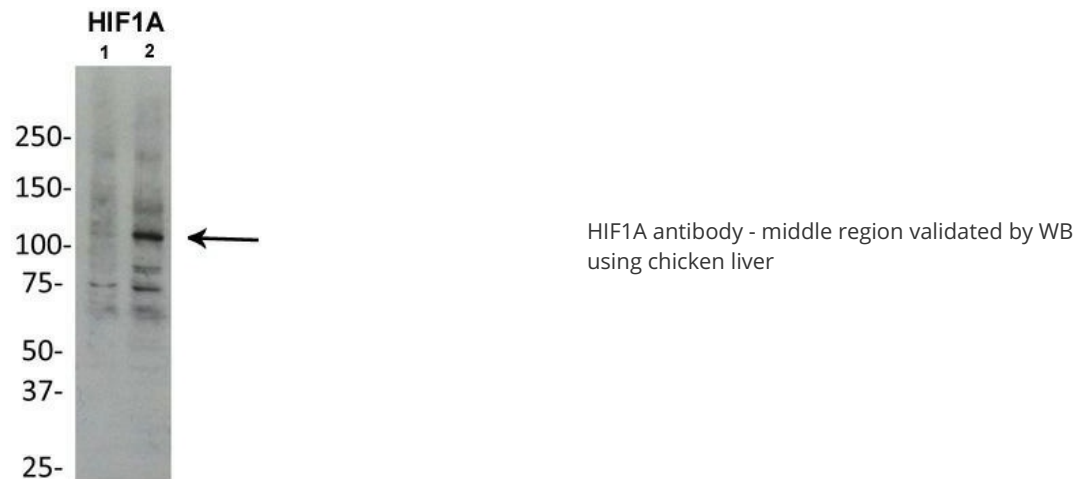
Immunogen Sequence Homology: Dog: 100%; Pig: 100%; Rat: 100%; Goat: 100%; Horse: 100%; Human: 100%; Mouse: 100%; Bovine: 100%; Rabbit: 100%; Guinea pig: 100%

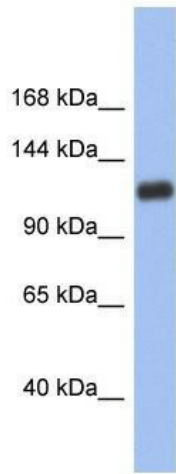
Protein Families:

Transcription Factors

Protein Pathways:

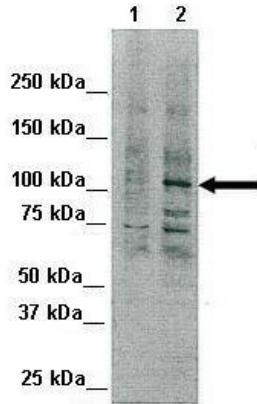
mTOR signaling pathway, Pathways in cancer, Renal cell carcinoma

Product images:



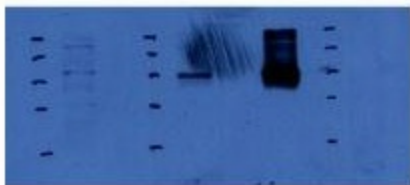
WB Suggested Anti-HIF1A Antibody Titration: 0.2-1 ug/ml; ELISA Titer: 1: 312500; Positive Control: Human Small Intestine

HIF1a 38054



Lanes: Lane 1: 80ug Chicken liver (nuclei); Primary Antibody Dilution: 1: 1000; Secondary Antibody: Goat anti-rabbit IgG; Secondary Antibody Dilution: 1: 2, 000; Gene Name: HIF1A; Submitted by: Silvia Moore, Weill Medical College of Cornell University;

Av-54 BSA Av-54 Milk BD



HIF1A antibody - middle region validated by WB using CoCl2 at 1: 500.