

## Product datasheet for **TA334682**

### Parathyroid hormone related protein (PTH1H) Rabbit Polyclonal Antibody

#### Product data:

Product Type:	Primary Antibodies
Applications:	IHC, WB
Recommended Dilution:	WB, IHC
Reactivity:	Human
Host:	Rabbit
Isotype:	IgG
Clonality:	Polyclonal
Immunogen:	The immunogen for anti-PTH1H antibody: synthetic peptide directed towards the middle region of human PTH1H. Synthetic peptide located within the following region: YKEQPLKTPGKKKKGKPGKRKEQEKKRRTSAWLDSGVTGSGLEGDHLS
Formulation:	Liquid. Purified antibody supplied in 1x PBS buffer with 0.09% (w/v) sodium azide and 2% sucrose. <i>Note that this product is shipped as lyophilized powder to China customers.</i>
Purification:	Protein A purified
Conjugation:	Unconjugated
Storage:	Store at -20°C as received.
Stability:	Stable for 12 months from date of receipt.
Predicted Protein Size:	20 kDa
Gene Name:	parathyroid hormone-like hormone
Database Link:	<a href="#">NP_002811</a> <a href="#">Entrez Gene 5744 Human</a> <a href="#">P12272</a>



[View online »](#)

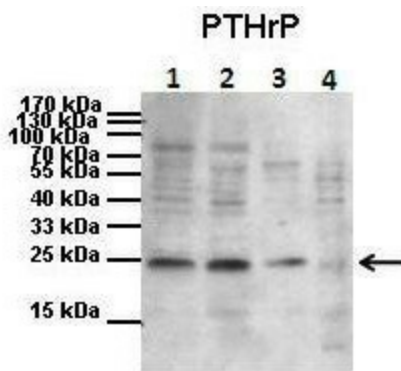
**Background:** PTHrP is a member of the parathyroid hormone family. This hormone regulates endochondral bone development and epithelial-mesenchymal interactions during the formation of the mammary glands and teeth. This hormone is involved in lactation possibly by regulating the mobilization and transfer of calcium to the milk. The receptor of this hormone, PTHR1, is responsible for most cases of humoral hypercalcemia of malignancy. Four alternatively spliced transcript variants encoding two distinct isoforms have been observed.

**Synonyms:** BDE2; HHM; PLP; PTHR; PTHRP

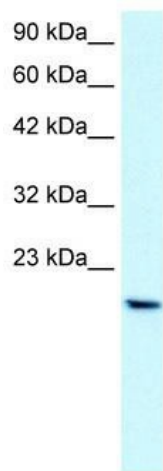
**Note:** Immunogen Sequence Homology: Dog: 100%; Pig: 100%; Rat: 100%; Horse: 100%; Human: 100%; Rabbit: 100%; Guinea pig: 100%; Goat: 93%; Mouse: 93%; Bovine: 93%

**Protein Families:** Druggable Genome, Secreted Protein

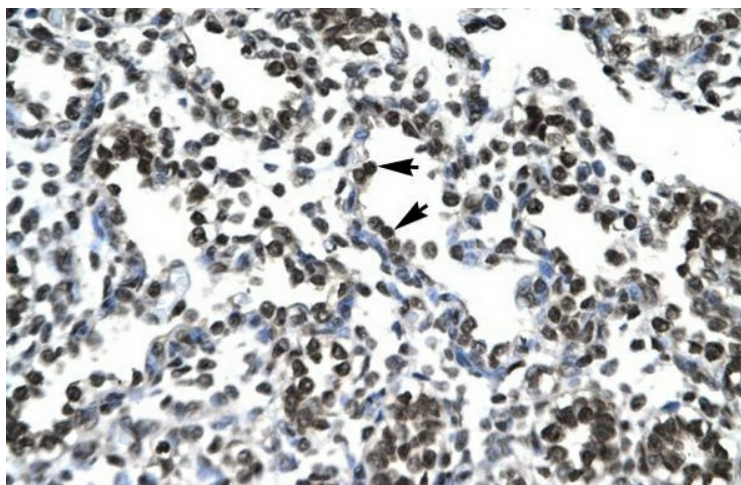
**Product images:**



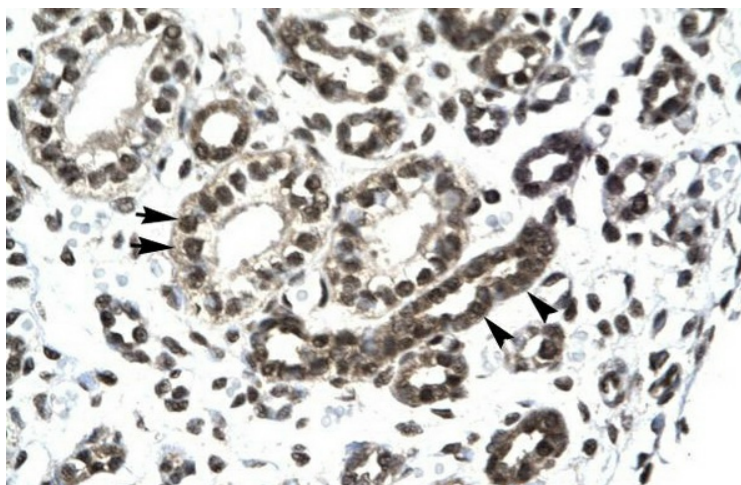
Primary antibody dilution: 1:1000; Secondary antibody: Goat anti-rabbit HRP; Secondary antibody dilution: 1:2000



WB Suggested Anti-PTHrP Antibody Titration: 2.0 ug/ml; Positive Control: HepG2 cell lysate



IHC Information: Rabbit Anti-PTHrP Antibody;  
Paraffin Embedded Tissue: Human Lung; Cellular Data: Alveolar cells; Antibody Concentration: 4.0-8.0 ug/ml; Magnification: 400X



Rabbit Anti-PTHrP Antibody; Paraffin Embedded Tissue: Human Kidney; Cellular Data: Epithelial cells of collecting tubule and renal tubule; Antibody Concentration: 4.0-8.0 ug/ml; Magnification: 400X