

Product datasheet for **TA334661**

beta Sarcoglycan (SGCB) Rabbit Polyclonal Antibody

Product data:

Product Type:	Primary Antibodies
Applications:	WB
Recommended Dilution:	WB
Reactivity:	Human
Host:	Rabbit
Isotype:	IgG
Clonality:	Polyclonal
Immunogen:	The immunogen for anti-SGCB antibody: synthetic peptide directed towards the middle region of human SGCB. Synthetic peptide located within the following region: FSTDYETHEFHLPSTGKSLNVQKASTERITSNATSDLNKVDGRAIVRGN
Formulation:	Liquid. Purified antibody supplied in 1x PBS buffer with 0.09% (w/v) sodium azide and 2% sucrose. <i>Note that this product is shipped as lyophilized powder to China customers.</i>
Purification:	Affinity Purified
Conjugation:	Unconjugated
Storage:	Store at -20°C as received.
Stability:	Stable for 12 months from date of receipt.
Predicted Protein Size:	35 kDa
Gene Name:	sarcoglycan beta
Database Link:	NP_000223 Entrez Gene 6443 Human Q16585



[View online »](#)

Background:

SGCB is a member of the sarcoglycan family. Sarcoglycans are transmembrane components in the dystrophin-glycoprotein complex which help stabilize the muscle fiber membranes and link the muscle cytoskeleton to the extracellular matrix. The dystrophin-glycoprotein complex (DGC) is a multisubunit protein complex that spans the sarcolemma and provides structural linkage between the subsarcolemmal cytoskeleton and the extracellular matrix of muscle cells. There are 3 main subcomplexes of the DGC: the cytoplasmic proteins dystrophin (DMD; MIM 300377) and syntrophin (SNTA1; MIM 601017), the alpha- and beta-dystroglycans (see MIM 128239), and the sarcoglycans (see, e.g., SGCA; MIM 600119) (Crosbie et al., 2000 [PubMed 10942431]). [supplied by OMIM]. Publication Note: This RefSeq record includes a subset of the publications that are available for this gene. Please see the Entrez Gene record to access additional publications. PRIMARYREFSEQ_SPAN PRIMARY_IDENTIFIER PRIMARY_SPAN COMP 1-1235 BC020709.1 1-1235 1236-1833 U31116.1 1257-1854 1834-4229 AK094731.1 47-2442

Synonyms:

A3b; LGMD2E; SGC

Note:

Immunogen Sequence Homology: Dog: 100%; Pig: 100%; Rat: 100%; Horse: 100%; Human: 100%; Mouse: 100%; Bovine: 100%; Rabbit: 100%; Guinea pig: 100%

Protein Families:

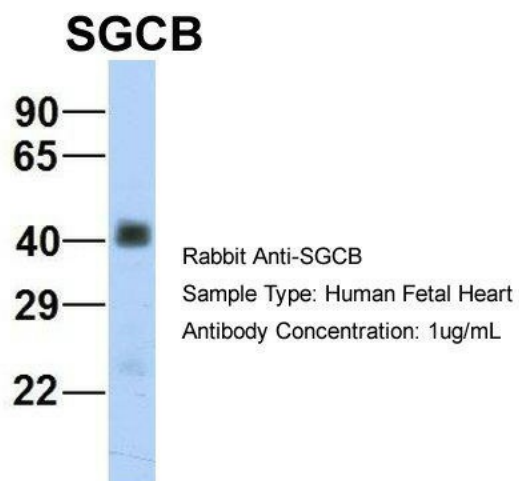
Druggable Genome, Transmembrane

Protein Pathways:

Arrhythmogenic right ventricular cardiomyopathy (ARVC), Dilated cardiomyopathy, Hypertrophic cardiomyopathy (HCM), Viral myocarditis

Product images:

WB Suggested Anti-SGCB Antibody Titration: 0.2-1 ug/ml; ELISA Titer: 1: 312500; Positive Control: Human heart



Host: Rabbit; Target Name: SGCB; Sample Tissue: Human Fetal Heart; Antibody Dilution: 1.0 ug/ml