

## Product datasheet for **TA334558**

### Glutaminase (GLS) Rabbit Polyclonal Antibody

#### Product data:

Product Type:	Primary Antibodies
Applications:	WB
Recommended Dilution:	WB
Reactivity:	Human, Rat
Host:	Rabbit
Isotype:	IgG
Clonality:	Polyclonal
Immunogen:	The immunogen for anti-GLS antibody: synthetic peptide directed towards the c terminal of human GLS. Synthetic peptide located within the following region: VNPFPKDRWNNTPMDEALHFGHHDVFKILQEYQVQYTPQGSDSDNGKENQT
Formulation:	Liquid. Purified antibody supplied in 1x PBS buffer with 0.09% (w/v) sodium azide and 2% sucrose. <i>Note that this product is shipped as lyophilized powder to China customers.</i>
Purification:	Affinity Purified
Conjugation:	Unconjugated
Storage:	Store at -20°C as received.
Stability:	Stable for 12 months from date of receipt.
Predicted Protein Size:	73 kDa
Gene Name:	glutaminase
Database Link:	<a href="#">NP_055720</a> <a href="#">Entrez Gene 24398 Rat</a> <a href="#">Entrez Gene 2744 Human</a> <a href="#">O94925</a>
Background:	Sahai (1983) [PubMed 6825316] demonstrated phosphate-activated glutaminase (EC 3.5.1.2) in human platelets. It is the major enzyme yielding glutamate from glutamine. Significance of the enzyme derives from its possible implication in behavior disturbances
Synonyms:	AAD20; GAC; GAM; GLS1; KGA
Note:	Immunogen Sequence Homology: Pig: 100%; Horse: 100%; Human: 100%; Rabbit: 100%; Guinea pig: 100%; Rat: 93%; Dog: 86%; Mouse: 86%

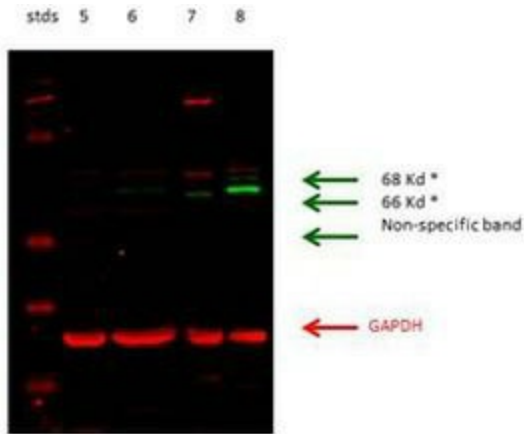


[View online »](#)

**Protein Pathways:**

Alanine, aspartate and glutamate metabolism, Arginine and proline metabolism, D-Glutamine and D-glutamate metabolism, Metabolic pathways, Nitrogen metabolism

**Product images:**



GLS antibody - C-terminal region validated by WB using Cortex/Kidney/Brain at 1: 2000.



WB Suggested Anti-GLS Antibody Titration: 0.2-1 ug/ml; Positive Control: ACHN cell lysate. GLS is strongly supported by BioGPS gene expression data to be expressed in Human ACHN cells