

## Product datasheet for **TA334177**

### CD18 (ITGB2) Goat Polyclonal Antibody

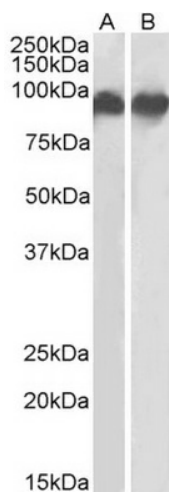
#### Product data:

Product Type:	Primary Antibodies
Applications:	WB
Recommended Dilution:	WB: 0.3-1ug/mL
Reactivity:	Human
Host:	Goat
Isotype:	IgG
Clonality:	Polyclonal
Immunogen:	Peptide with sequence C-ETQEDHNGGQKQLS, from the internal region of the protein sequence according to NP_000202.2.
Formulation:	Supplied at 0.5 mg/ml in Tris saline, 0.02% sodium azide, pH7.3 with 0.5% bovine serum albumin.
Concentration:	lot specific
Purification:	Purified from goat serum by ammonium sulphate precipitation followed by antigen affinity chromatography using the immunizing peptide.
Conjugation:	Unconjugated
Storage:	Store at -20°C as received.
Stability:	Stable for 12 months from date of receipt.
Gene Name:	integrin subunit beta 2
Database Link:	<a href="#">NP_000202</a> <a href="#">Entrez Gene 3689 Human</a> <a href="#">P05107</a>
Synonyms:	CD18; LAD; LCAMB; LFA-1; MAC-1; MF17; MFI7
Protein Families:	Druggable Genome, Transmembrane
Protein Pathways:	Cell adhesion molecules (CAMs), Leukocyte transendothelial migration, Natural killer cell mediated cytotoxicity, Regulation of actin cytoskeleton, Viral myocarditis



[View online »](#)

## Product images:



TA334177 (0.3ug/ml) staining of K562 (A) and U937 (B) lysates (35ug protein in RIPA buffer). Primary incubation was 1 hour. Detected by chemiluminescence