

Product datasheet for **TA334149**

SLC41A3 Rabbit Polyclonal Antibody

Product data:

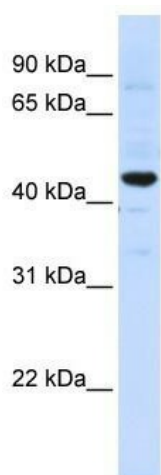
Product Type:	Primary Antibodies
Applications:	WB
Recommended Dilution:	WB
Reactivity:	Human
Host:	Rabbit
Isotype:	IgG
Clonality:	Polyclonal
Immunogen:	The immunogen for Anti-SLC41A3 Antibody: synthetic peptide directed towards the C terminal of human SLC41A3. Synthetic peptide located within the following region: WHQALDPDNHCIPYLTGLGDLLGSSSVGHTAAVPRRCTASPGWGLIQPFI
Formulation:	Liquid. Purified antibody supplied in 1x PBS buffer with 0.09% (w/v) sodium azide and 2% sucrose. <i>Note that this product is shipped as lyophilized powder to China customers.</i>
Purification:	Affinity Purified
Conjugation:	Unconjugated
Storage:	Store at -20°C as received.
Stability:	Stable for 12 months from date of receipt.
Predicted Protein Size:	55 kDa
Gene Name:	solute carrier family 41 member 3
Database Link:	NP_001008485 Entrez Gene 54946 Human Q96GZ6
Background:	SLC41A3 is a multi-pass membrane protein. It belongs to the SLC41A transporter family. The exact function of SLC41A3 remains unknown.
Synonyms:	SLC41A1-L2
Note:	Immunogen sequence homology: Dog: 100%; Pig: 100%; Rat: 100%; Horse: 100%; Human: 100%; Mouse: 100%; Bovine: 100%; Rabbit: 100%; Guinea pig: 100%; Zebrafish: 92%



[View online »](#)

Protein Families: Transmembrane

Product images:



WB Suggested Anti-SLC41A3 Antibody Titration: 0.2-1 ug/ml; ELISA Titer: 1:62500; Positive Control: HeLa cell lysate; SLC41A3 is supported by BioGPS gene expression data to be expressed in HeLa