

Product datasheet for **TA334128**

Camk2b Rabbit Polyclonal Antibody

Product data:

Product Type:	Primary Antibodies
Applications:	WB
Recommended Dilution:	WB
Reactivity:	Rat
Host:	Rabbit
Isotype:	IgG
Clonality:	Polyclonal
Immunogen:	The immunogen for Anti-Camk2b Antibody is: synthetic peptide directed towards the middle region of Rat Camk2b. Synthetic peptide located within the following region: DIVAREYYSEADASHCIQILEAVLHCHQMGMVHRDLKPENLLLASKCKG
Formulation:	Liquid. Purified antibody supplied in 1x PBS buffer with 0.09% (w/v) sodium azide and 2% sucrose. <i>Note that this product is shipped as lyophilized powder to China customers.</i>
Purification:	Affinity Purified
Conjugation:	Unconjugated
Storage:	Store at -20°C as received.
Stability:	Stable for 12 months from date of receipt.
Predicted Protein Size:	64 kDa
Gene Name:	calcium/calmodulin-dependent protein kinase II beta
Database Link:	NP_001035813 Entrez Gene 24245 Rat P08413
Background:	beta subunit of calcium/calmodulin-dependent protein kinase II; may be involved in retinal development [RGD, Feb 2006]. Transcript Variant: This variant (2) has multiple differences in the coding region, compared to variant 1. The resulting protein (isoform 2) is shorter when it is compared to isoform 1. Publication Note: This RefSeq record includes a subset of the publications that are available for this gene. Please see the Gene record to access additional publications.

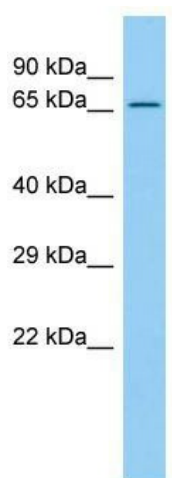


[View online »](#)

Synonyms: CAM2; CAMK2; CAMKB; MGC29528; OTTHUMP00000159355; OTTHUMP00000159356; OTTHUMP00000209343

Note: Immunogen sequence homology: Dog: 100%; Pig: 100%; Rat: 100%; Human: 100%; Mouse: 100%; Bovine: 100%; Zebrafish: 100%; Guinea pig: 100%; Horse: 93%; Yeast: 93%; Rabbit: 93%

Product images:



Host: Rabbit; Target Name: Camk2b; Sample Tissue: Rat Thymus lysates; Antibody Dilution: 1.0 ug/ml