

Product datasheet for **TA333926**

YL1 (VPS72) Rabbit Polyclonal Antibody

Product data:

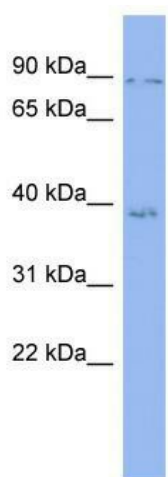
Product Type:	Primary Antibodies
Applications:	WB
Recommended Dilution:	WB
Reactivity:	Human
Host:	Rabbit
Isotype:	IgG
Clonality:	Polyclonal
Immunogen:	The immunogen for Anti-VPS72 Antibody: synthetic peptide directed towards the N terminal of human VPS72. Synthetic peptide located within the following region: GGFTEESGDDEYQGDQSDTEDEVDSDFIDEGDEPSSDGEAEPRRKRRV
Formulation:	Liquid. Purified antibody supplied in 1x PBS buffer with 0.09% (w/v) sodium azide and 2% sucrose. <i>Note that this product is shipped as lyophilized powder to China customers.</i>
Purification:	Affinity Purified
Conjugation:	Unconjugated
Storage:	Store at -20°C as received.
Stability:	Stable for 12 months from date of receipt.
Predicted Protein Size:	40 kDa
Gene Name:	vacuolar protein sorting 72 homolog
Database Link:	NP_005988 Entrez Gene 6944 Human Q15906
Background:	VPS72 could be a DNA-binding transcriptional regulator. VPS72 may be involved in chromatin modification and remodeling.
Synonyms:	CFL1; Swc2; TCFL1; YL-1; YL1
Note:	Immunogen sequence homology: Dog: 100%; Pig: 100%; Rat: 100%; Horse: 100%; Human: 100%; Mouse: 100%; Bovine: 100%; Rabbit: 100%; Guinea pig: 100%; Zebrafish: 77%



[View online »](#)

Protein Families: Transcription Factors

Product images:



WB Suggested Anti-VPS72 Antibody Titration: 0.2-1 ug/ml; ELISA Titer: 1:2500; Positive Control: ACHN cell lysate