

## Product datasheet for **TA333856**

### STK38L Rabbit Polyclonal Antibody

#### Product data:

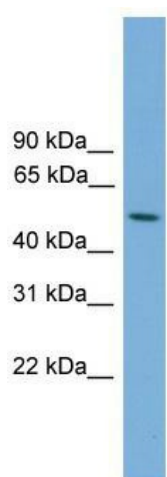
Product Type:	Primary Antibodies
Applications:	WB
Recommended Dilution:	WB
Reactivity:	Human
Host:	Rabbit
Isotype:	IgG
Clonality:	Polyclonal
Immunogen:	The immunogen for Anti-STK38L Antibody: synthetic peptide directed towards the middle region of human STK38L. Synthetic peptide located within the following region: PAAIPIEIKSIDDTSNFDDDFPESDILQPVPNTTEPDYKSKDWVFLNYTYK
Formulation:	Liquid. Purified antibody supplied in 1x PBS buffer with 0.09% (w/v) sodium azide and 2% sucrose. <i>Note that this product is shipped as lyophilized powder to China customers.</i>
Purification:	Affinity Purified
Conjugation:	Unconjugated
Storage:	Store at -20°C as received.
Stability:	Stable for 12 months from date of receipt.
Predicted Protein Size:	54 kDa
Gene Name:	serine/threonine kinase 38 like
Database Link:	<a href="#">NP_055815</a> <a href="#">Entrez Gene 23012 Human</a> <a href="#">Q9Y2H1</a>
Background:	STK38L is involved in the regulation of structural processes in differentiating and mature neuronal cells.
Synonyms:	NDR2
Note:	Immunogen sequence homology: Dog: 100%; Rat: 100%; Horse: 100%; Human: 100%; Mouse: 100%; Bovine: 100%; Rabbit: 100%; Pig: 93%



[View online »](#)

Protein Families: Druggable Genome, Protein Kinase

### Product images:



WB Suggested Anti-STK38L Antibody Titration:  
0.2-1 ug/ml; ELISA Titer: 1: 312500; Positive  
Control: ACHN cell lysate