

## Product datasheet for **TA332864**

### TIP49A (RUVBL1) Rabbit Polyclonal Antibody

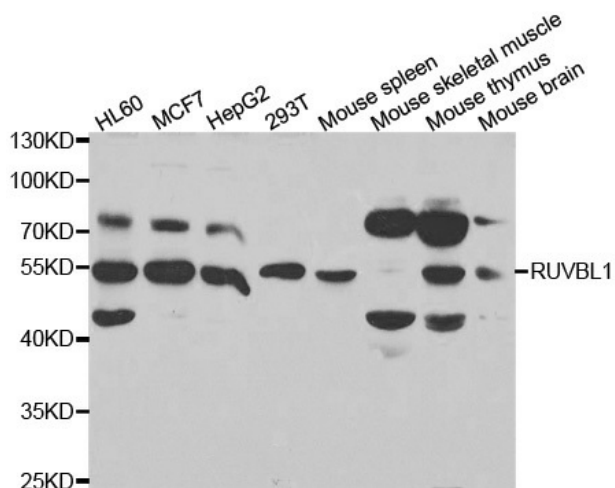
#### Product data:

Product Type:	Primary Antibodies
Applications:	ICC/IF, IHC, WB
Recommended Dilution:	WB 1:500 - 1:2000;IF 1:50- 1:200
Reactivity:	Human, Mouse
Host:	Rabbit
Isotype:	IgG
Clonality:	Polyclonal
Immunogen:	Recombinant protein of human RUVBL1
Formulation:	Store at -20°C (regular) and -80°C (long term). Avoid freeze / thaw cycles. Buffer: PBS with 0.02% sodium azide, 50% glycerol, pH7.3.
Concentration:	lot specific
Purification:	Affinity purification
Conjugation:	Unconjugated
Storage:	Store at -20°C as received.
Stability:	Stable for 12 months from date of receipt.
Predicted Protein Size:	456
Gene Name:	RuvB like AAA ATPase 1
Database Link:	<a href="#">NP_003698</a> <a href="#">Entrez Gene 56505 Mouse</a> <a href="#">Entrez Gene 8607 Human</a> <a href="#">Q9Y265</a>
Synonyms:	ECP54; INO80H; NMP238; PONTIN; Pontin52; RVB1; TIH1; TIP49; TIP49A
Protein Families:	Stem cell - Pluripotency, Transcription Factors
Protein Pathways:	Wnt signaling pathway

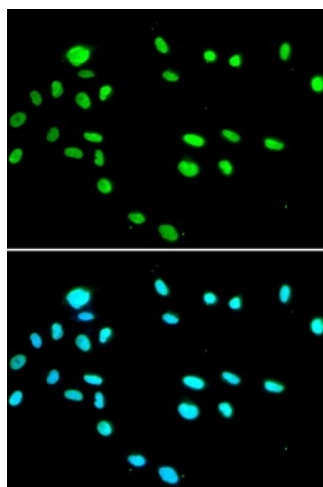


[View online »](#)

Product images:



Western blot analysis of extracts of various cell lines, using RUVBL1 antibody.



Immunofluorescence analysis of A549 cell using RUVBL1 antibody. Blue: DAPI for nuclear staining.