

## Product datasheet for **TA332825**

### EPO Rabbit Polyclonal Antibody

#### Product data:

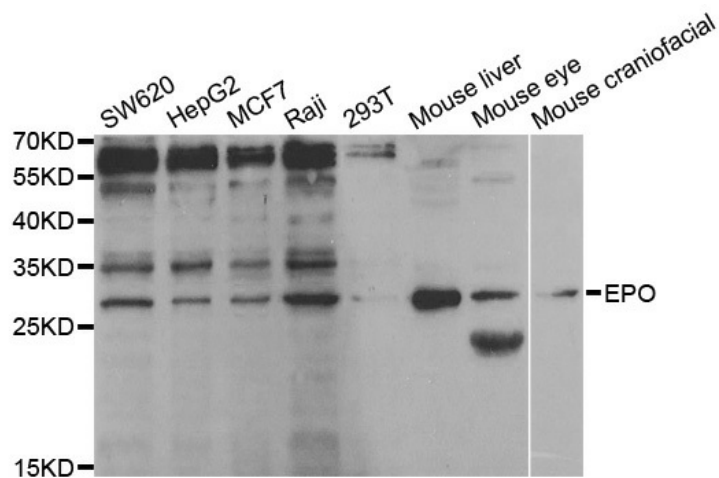
Product Type:	Primary Antibodies
Applications:	ICC/IF, IHC, WB
Recommended Dilution:	WB 1:500 - 1:2000
Reactivity:	Human, Mouse, Rat
Host:	Rabbit
Isotype:	IgG
Clonality:	Polyclonal
Immunogen:	Recombinant protein of human EPO
Formulation:	Store at -20°C (regular) and -80°C (long term). Avoid freeze / thaw cycles. Buffer: PBS with 0.02% sodium azide, 50% glycerol, pH7.3.
Concentration:	lot specific
Purification:	Affinity purification
Conjugation:	Unconjugated
Storage:	Store at -20°C as received.
Stability:	Stable for 12 months from date of receipt.
Predicted Protein Size:	193
Gene Name:	erythropoietin
Database Link:	<a href="#">NP_000790</a> <a href="#">Entrez Gene 13856 MouseEntrez Gene 24335 RatEntrez Gene 2056 Human P01588</a>
Background:	This gene is a member of the EPO/TPO family and encodes a secreted, glycosylated cytokine composed of four alpha helical bundles. The protein is found in the plasma and regulates red cell production by promoting erythroid differentiation and initiating hemoglobin synthesis. This protein also has neuroprotective activity against a variety of potential brain injuries and antiapoptotic functions in several tissue types.
Synonyms:	EP; MVCD2
Protein Families:	Druggable Genome, ES Cell Differentiation/IPS, Secreted Protein, Transmembrane



[View online »](#)

**Protein Pathways:** Cytokine-cytokine receptor interaction, Hematopoietic cell lineage, Jak-STAT signaling pathway

**Product images:**



Western blot analysis of extracts of various cell lines, using EPO antibody.