

Product datasheet for **TA332791**

GABARAP Rabbit Polyclonal Antibody

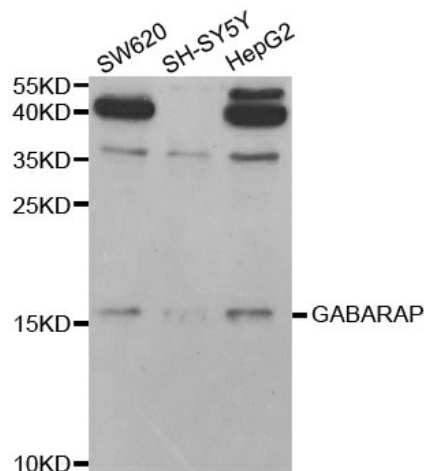
Product data:

| | |
|-------------------------|--|
| Product Type: | Primary Antibodies |
| Applications: | ICC/IF, IHC, WB |
| Recommended Dilution: | WB 1:500 - 1:2000;IF 1:50- 1:200 |
| Reactivity: | Human, Mouse, Rat |
| Host: | Rabbit |
| Isotype: | IgG |
| Clonality: | Polyclonal |
| Immunogen: | Recombinant protein of human GABARAP |
| Formulation: | Store at -20°C (regular) and -80°C (long term). Avoid freeze / thaw cycles. Buffer: PBS with 0.02% sodium azide, 50% glycerol, pH7.3. |
| Concentration: | lot specific |
| Purification: | Affinity purification |
| Conjugation: | Unconjugated |
| Storage: | Store at -20°C as received. |
| Stability: | Stable for 12 months from date of receipt. |
| Predicted Protein Size: | 117 |
| Gene Name: | GABA type A receptor-associated protein |
| Database Link: | NP_009209 Entrez Gene 56486 Mouse Entrez Gene 58974 Rat Entrez Gene 11337 Human O95166 |
| Background: | Gamma-aminobutyric acid A receptors |
| Synonyms: | ATG8A; GABARAP-a; MM46 |
| Protein Families: | Druggable Genome |
| Protein Pathways: | Regulation of autophagy |

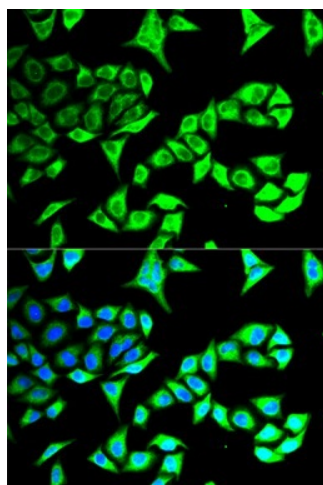


[View online »](#)

Product images:



Western blot analysis of extracts of various cell lines, using GABARAP antibody.



Immunofluorescence analysis of MCF-7 cell using GABARAP antibody. Blue: DAPI for nuclear staining.