

## Product datasheet for **TA332524**

### RIP2 (RIPK2) Rabbit Polyclonal Antibody

#### Product data:

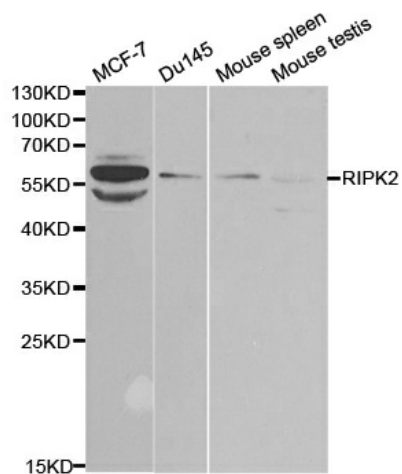
Product Type:	Primary Antibodies
Applications:	WB
Recommended Dilution:	WB 1:500 - 1:2000
Reactivity:	Human, Mouse, Rat
Host:	Rabbit
Isotype:	IgG
Clonality:	Polyclonal
Immunogen:	Recombinant protein of human RIPK2
Formulation:	Store at -20°C (regular) and -80°C (long term). Avoid freeze / thaw cycles. Buffer: PBS with 0.02% sodium azide, 50% glycerol, pH7.3.
Concentration:	lot specific
Purification:	Affinity purification
Conjugation:	Unconjugated
Storage:	Store at -20°C as received.
Stability:	Stable for 12 months from date of receipt.
Predicted Protein Size:	540
Gene Name:	receptor interacting serine/threonine kinase 2
Database Link:	<a href="#">NP_003812</a> <a href="#">Entrez Gene 192656</a> <a href="#">MouseEntrez Gene 362491</a> <a href="#">RatEntrez Gene 8767</a> <a href="#">Human O43353</a>
Background:	This gene encodes a member of the receptor-interacting protein (RIP) family of serine/threonine protein kinases. The encoded protein contains a C-terminal caspase activation and recruitment domain (CARD), and is a component of signaling complexes in both the innate and adaptive immune pathways. It is a potent activator of NF-kappaB and inducer of apoptosis in response to various stimuli.
Synonyms:	CARD3; CARDIAK; CCK; GIG30; RICK; RIP2
Protein Families:	Druggable Genome, Protein Kinase



[View online »](#)

Protein Pathways: Neurotrophin signaling pathway, NOD-like receptor signaling pathway

### Product images:



Western blot analysis of extracts of various cell lines, using RIPK2 antibody.