

Product datasheet for **TA332475**

H2BC21 Rabbit Polyclonal Antibody

Product data:

Product Type:	Primary Antibodies
Applications:	IHC, WB
Recommended Dilution:	WB 1:500 - 1:2000
Reactivity:	Human, Mouse, Rat, Other (Wide Range)
Host:	Rabbit
Isotype:	IgG
Clonality:	Polyclonal
Immunogen:	Recombinant protein of human HIST2H2BE
Formulation:	Store at -20°C (regular) and -80°C (long term). Avoid freeze / thaw cycles. Buffer: PBS with 0.02% sodium azide, 50% glycerol, pH7.3.
Concentration:	lot specific
Purification:	Affinity purification
Conjugation:	Unconjugated
Storage:	Store at -20°C as received.
Stability:	Stable for 12 months from date of receipt.
Predicted Protein Size:	126
Gene Name:	histone cluster 2, H2be
Database Link:	NP_003519 Entrez Gene 319190 MouseEntrez Gene 295274 RatEntrez Gene 8349 Human Q16778
Background:	Histones are basic nuclear proteins that are responsible for the nucleosome structure of the chromosomal fiber in eukaryotes. Two molecules of each of the four core histones (H2A, H2B, H3, and H4) form an octamer, around which approximately 146 bp of DNA is wrapped in repeating units, called nucleosomes. The linker histone, H1, interacts with linker DNA between nucleosomes and functions in the compaction of chromatin into higher order structures. This gene encodes a member of the histone H2B family, and generates two transcripts through the use of the conserved stem-loop termination motif, and the polyA addition motif.

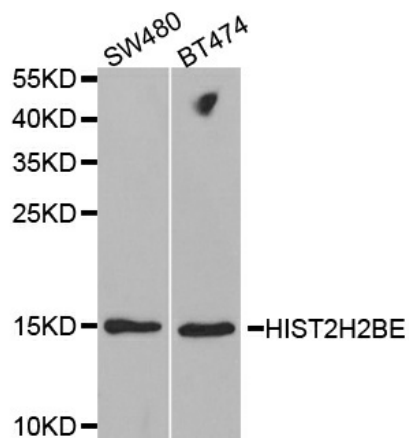


[View online »](#)

Synonyms: GL105; H2B; H2B.1; H2BFQ; H2BGL105; H2BQ

Protein Pathways: Systemic lupus erythematosus

Product images:



Western blot analysis of extracts of various cell lines, using HIST2H2BE antibody.