

Product datasheet for **TA332386**

SOX2 Rabbit Polyclonal Antibody

Product data:

Product Type:	Primary Antibodies
Applications:	ICC/IF, IHC, IP, WB
Recommended Dilution:	WB 1:500 - 1:2000;IF 1:50 - 1:200
Reactivity:	Human, Mouse, Rat
Host:	Rabbit
Isotype:	IgG
Clonality:	Polyclonal
Immunogen:	Recombinant protein of human SOX2
Formulation:	Store at -20°C (regular) and -80°C (long term). Avoid freeze / thaw cycles. Buffer: PBS with 0.02% sodium azide, 50% glycerol, pH7.3.
Concentration:	lot specific
Purification:	Affinity purification
Conjugation:	Unconjugated
Storage:	Store at -20°C as received.
Stability:	Stable for 12 months from date of receipt.
Predicted Protein Size:	34 kDa
Gene Name:	SRY-box 2
Database Link:	NP_003097 Entrez Gene 20674 Mouse Entrez Gene 499593 Rat Entrez Gene 6657 Human P48431

Background: Embryonic stem cells are derived from the inner cell mass of the blastocyst and are unique in their pluripotent capacity and potential for self-renewal. Sox2 is one of a set of transcription factors that are crucial for the maintenance of pluripotency (1). Sox2, Oct-4, and Nanog cooperate in this network (1-3), and siRNA knockdown of either Sox2 or Oct-4 results in loss of pluripotency (4,5). Chromatin immunoprecipitation experiments have shown that Sox2 and Oct-4 bind to thousands of gene regulatory sites, highlighting the importance of these transcription factors in early embryonic development (6,7). It has recently been shown that Sox2 is amplified in lung and esophageal squamous cell tumors (8).

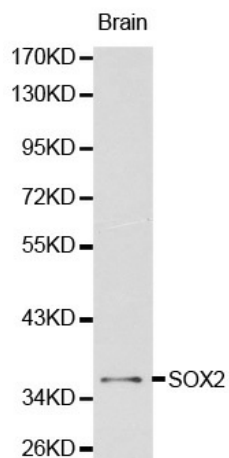


[View online »](#)

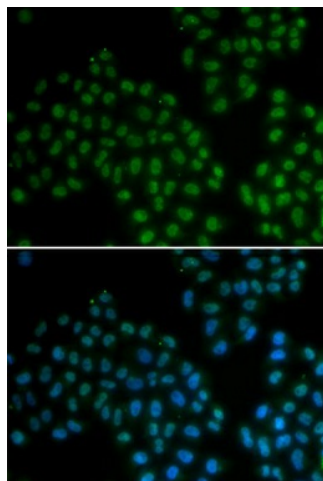
Synonyms: ANOP3; MCOPS3

Protein Families: Adult stem cells, Cancer stem cells, Embryonic stem cells, ES Cell Differentiation/IPS, Induced pluripotent stem cells, Transcription Factors

Product images:



Western blot analysis of brain cell lysate using SOX2 antibody.



Immunofluorescence analysis of MCF7 cell using SOX2 antibody. Blue: DAPI for nuclear staining.