

Product datasheet for **TA332373**

BCL2 Rabbit Polyclonal Antibody

Product data:

Product Type:	Primary Antibodies
Applications:	ICC/IF, IHC, IP, WB
Recommended Dilution:	WB 1:500 - 1:2000;IF 1:50 - 1:200;IP 1:20 - 1:50
Reactivity:	Human, Mouse
Host:	Rabbit
Isotype:	IgG
Clonality:	Polyclonal
Immunogen:	Recombinant protein of human BCL2
Formulation:	Store at -20°C (regular) and -80°C (long term). Avoid freeze / thaw cycles. Buffer: PBS with 0.02% sodium azide, 50% glycerol, pH7.3.
Concentration:	lot specific
Purification:	Affinity purification
Conjugation:	Unconjugated
Storage:	Store at -20°C as received.
Stability:	Stable for 12 months from date of receipt.
Predicted Protein Size:	26 kDa
Gene Name:	B-cell CLL/lymphoma 2
Database Link:	NP_000648 Entrez Gene 12043 Mouse Entrez Gene 596 Human P10415



[View online »](#)

Background:

BCL2 exerts a survival function in response to a wide range of apoptotic stimuli through inhibition of mitochondrial cytochrome c release (1). It has been implicated in modulating mitochondrial calcium homeostasis and proton flux (2). Several phosphorylation sites have been identified within BCL2 including Thr56, Ser70, Thr74 and Ser87 (3). It has been suggested that these phosphorylation sites may be targets of the ASK1/MKK7/JNK1 pathway, and that phosphorylation of BCL2 may be a marker for mitotic events (4,5). Mutation of BCL2 at Thr56 or Ser87 inhibits its anti-apoptotic activity during glucocorticoid-induced apoptosis of T lymphocytes (6). Interleukin 3 and JNK-induced BCL2 phosphorylation at Ser70 may be required for its enhanced anti-apoptotic functions (7).

Synonyms:

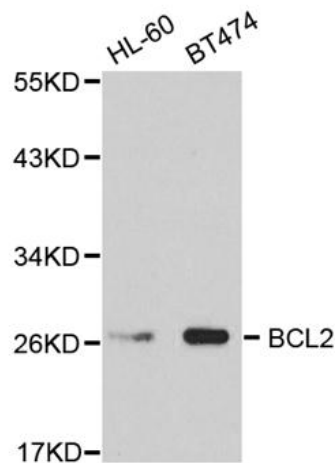
Bcl-2; PPP1R50

Protein Families:

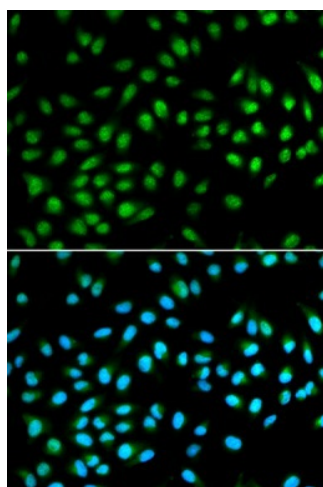
Druggable Genome, ES Cell Differentiation/IPS, Stem cell - Pluripotency, Transmembrane

Protein Pathways:

Amyotrophic lateral sclerosis (ALS), Apoptosis, Colorectal cancer, Focal adhesion, Neurotrophin signaling pathway, Pathways in cancer, Prostate cancer, Small cell lung cancer

Product images:

Western blot analysis of extracts of various cell lines using BCL2 antibody.



Immunofluorescence analysis of A549 cell using BCL2 antibody. Blue: DAPI for nuclear staining.