

## Product datasheet for **TA332361**

### MRP2 (ABCC2) Rabbit Polyclonal Antibody

#### Product data:

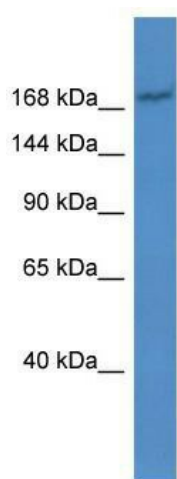
Product Type:	Primary Antibodies
Applications:	WB
Recommended Dilution:	WB
Reactivity:	Mouse
Host:	Rabbit
Isotype:	IgG
Clonality:	Polyclonal
Immunogen:	The immunogen for Anti-Abcc2 Antibody: synthetic peptide corresponding to a region of Mouse. Synthetic peptide located within the following region: TIQDVNLDIKPGQLVAVVGTVGSGKSSLISAMLGEMENVHGHITIKGSIA
Formulation:	Liquid. Purified antibody supplied in 1x PBS buffer with 0.09% (w/v) sodium azide and 2% sucrose. <i>Note that this product is shipped as lyophilized powder to China customers.</i>
Conjugation:	Unconjugated
Storage:	Store at -20°C as received.
Stability:	Stable for 12 months from date of receipt.
Predicted Protein Size:	174 kDa
Gene Name:	ATP binding cassette subfamily C member 2
Database Link:	<a href="#">NP_000383</a> <a href="#">Entrez Gene 12780 Mouse</a> <a href="#">Q92887</a>
Background:	Abcc2 mediates hepatobiliary excretion of numerous organic anions. Abcc2 may function as a cellular cisplatin transporter.
Synonyms:	ABC30; CMOAT; cMRP; DJS; MRP2
Note:	Immunogen sequence homology: Rat: 100%; Human: 100%; Rabbit: 100%; Pig: 93%; Horse: 93%; Guinea pig: 93%; Dog: 86%; Mouse: 86%; Bovine: 79%
Protein Families:	Druggable Genome, Transmembrane



[View online »](#)

Protein Pathways: ABC transporters

**Product images:**



WB Suggested Anti-Abcc2 Antibody Titration: 0.2-1 ug/ml; ELISA Titer: 1: 312500; Positive Control: Mouse Spleen