

Product datasheet for **TA332019**

BTN2A2 Rabbit Polyclonal Antibody

Product data:

Product Type:	Primary Antibodies
Applications:	WB
Recommended Dilution:	WB
Reactivity:	Human
Host:	Rabbit
Isotype:	IgG
Clonality:	Polyclonal
Immunogen:	The immunogen for Anti-BTN2A2 Antibody is: synthetic peptide directed towards the N-terminal region of Human BTN2A2. Synthetic peptide located within the following region: EDMEVRWFRSQFSPA VFYKGG RERTEEQMEEYRGRITFVSKDINRG SVA
Formulation:	Liquid. Purified antibody supplied in 1x PBS buffer with 0.09% (w/v) sodium azide and 2% sucrose. <i>Note that this product is shipped as lyophilized powder to China customers.</i>
Conjugation:	Unconjugated
Storage:	Store at -20°C as received.
Stability:	Stable for 12 months from date of receipt.
Predicted Protein Size:	59 kDa
Gene Name:	butyrophilin subfamily 2 member A2
Database Link:	NP_008926 Entrez Gene 10385 Human Q8WVV5
Background:	Butyrophilin is the major protein associated with fat droplets in the milk. This gene is a member of the BTN2 subfamily of genes, which encode proteins belonging to the butyrophilin protein family. The gene is located in a cluster on chromosome 6, consisting of seven genes belonging to the expanding B7/butyrophilin-like group, a subset of the immunoglobulin gene superfamily. The encoded protein is a type I receptor glycoprotein involved in lipid, fatty-acid and sterol metabolism. Several alternatively spliced transcript variants encoding different isoforms have been found for this gene.



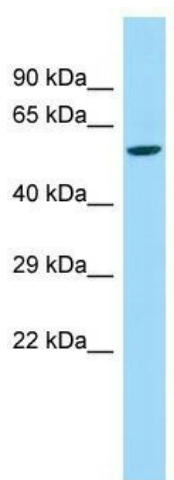
[View online »](#)

Synonyms: BT2.2; BTF2; BTN2.2

Note: Immunogen sequence homology: Human: 100%; Dog: 93%; Pig: 93%; Horse: 93%; Rabbit: 93%; Guinea pig: 93%; Bovine: 79%

Protein Families: Druggable Genome, Transmembrane

Product images:



Host: Rabbit; Target Name: BTN2A2; Sample Tissue: Fetal Heart lysates; Antibody Dilution: 1.0ug/ml