

## Product datasheet for TA331254

### GALK2 Rabbit Polyclonal Antibody

#### Product data:

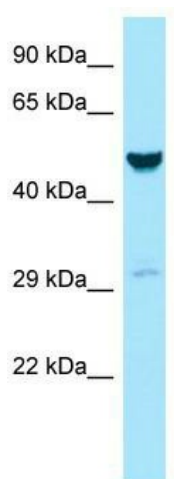
Product Type:	Primary Antibodies
Applications:	WB
Recommended Dilution:	WB
Reactivity:	Human
Host:	Rabbit
Isotype:	IgG
Clonality:	Polyclonal
Immunogen:	The immunogen for Anti-GALK2 antibody is: synthetic peptide directed towards the C-terminal region of Human GALK2. Synthetic peptide located within the following region: TVSMVPADKLPFLANVHKAYYQRSDGSLAPEKQSLFATKPGGGALVLE
Formulation:	Liquid. Purified antibody supplied in 1x PBS buffer with 0.09% (w/v) sodium azide and 2% sucrose. <i>Note that this product is shipped as lyophilized powder to China customers.</i>
Conjugation:	Unconjugated
Storage:	Store at -20°C as received.
Stability:	Stable for 12 months from date of receipt.
Predicted Protein Size:	50 kDa
Gene Name:	galactokinase 2
Database Link:	<a href="#">NP_002035</a> <a href="#">Entrez Gene 2585 Human Q01415</a>
Background:	This gene encodes a highly efficient N-acetylgalactosamine (GalNAc) kinase, which has galactokinase activity when galactose is present at high concentrations. Two alternatively spliced transcript variants encoding different isoforms have been found for this gene.
Synonyms:	GK2
Note:	Human: 100%; Horse: 93%; Bovine: 86%; Pig: 79%; Rabbit: 79%
Protein Families:	Druggable Genome



[View online »](#)

Protein Pathways: Amino sugar and nucleotide sugar metabolism, Galactose metabolism, Metabolic pathways

**Product images:**



WB Suggested Anti-GALK2 Antibody; Titration: 1.0 ug/ml; Positive Control: MCF7 Whole Cell GALK2 is supported by BioGPS gene expression data to be expressed in MCF7