

Product datasheet for **TA331132**

PAX3 Rabbit Polyclonal Antibody

Product data:

Product Type:	Primary Antibodies
Applications:	IHC, WB
Recommended Dilution:	IHC, WB
Reactivity:	Human, Mouse
Host:	Rabbit
Isotype:	IgG
Clonality:	Polyclonal
Immunogen:	The immunogen for anti-PAX3 antibody: synthetic peptide directed towards the C terminal of human PAX3. Synthetic peptide located within the following region: GGVPHQPQTDYALSPLTGGLEPTTTVSASCSQRLDHMKSLDSLPTSQSYC
Formulation:	Liquid. Purified antibody supplied in 1x PBS buffer with 0.09% (w/v) sodium azide and 2% sucrose. <i>Note that this product is shipped as lyophilized powder to China customers.</i>
Conjugation:	Unconjugated
Storage:	Store at -20°C as received.
Stability:	Stable for 12 months from date of receipt.
Predicted Protein Size:	53 kDa
Gene Name:	paired box 3
Database Link:	NP_852122 Entrez Gene 18505 Mouse Entrez Gene 5077 Human P23760



[View online »](#)

Background:

PAX3 is a member of the paired box (PAX) family of transcription factors. Members of the PAX family typically contain a paired box domain and a paired-type homeodomain. These genes play critical roles during fetal development. Mutations in paired box gene 3 are associated with Waardenburg syndrome, craniofacial-deafness-hand syndrome, and alveolar rhabdomyosarcoma. The translocation t(2;13)(q35;q14), which represents a fusion between PAX3 and the forkhead gene, is a frequent finding in alveolar rhabdomyosarcoma. This gene is a member of the paired box (PAX) family of transcription factors. Members of the PAX family typically contain a paired box domain and a paired-type homeodomain. These genes play critical roles during fetal development. Mutations in paired box gene 3 are associated with Waardenburg syndrome, craniofacial-deafness-hand syndrome, and alveolar rhabdomyosarcoma. The translocation t(2;13)(q35;q14), which represents a fusion between PAX3 and the forkhead gene, is a frequent finding in alveolar rhabdomyosarcoma. Alternative splicing results in transcripts encoding isoforms with different C-termini.

Synonyms:

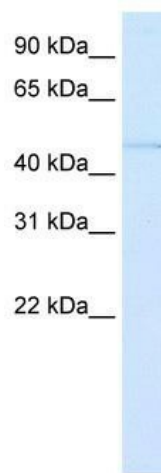
CDHS; HUP2; WS1; WS3

Note:

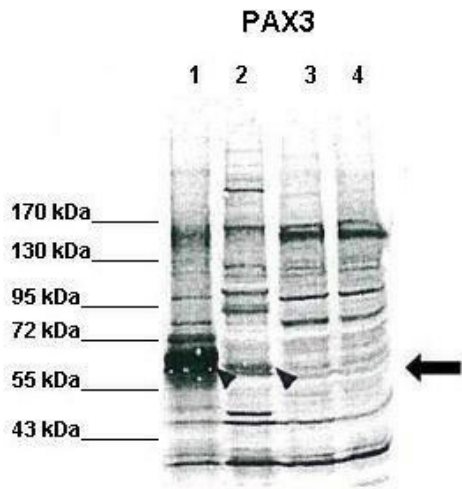
Dog: 100%; Pig: 100%; Rat: 100%; Horse: 100%; Human: 100%; Mouse: 100%; Bovine: 100%; Rabbit: 100%; Guinea pig: 100%; Zebrafish: 79%

Protein Families:

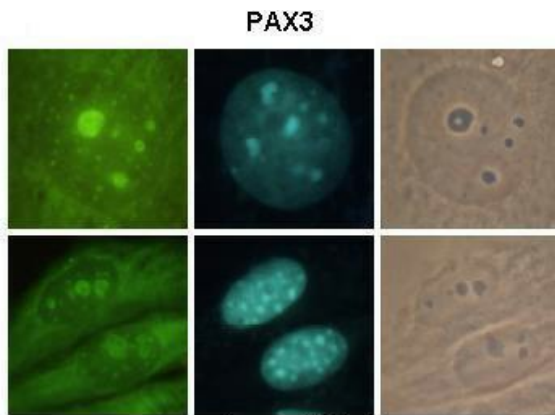
Adult stem cells, Druggable Genome, Embryonic stem cells, ES Cell Differentiation/IPS, Transcription Factors

Product images:

WB Suggested Anti-PAX3 Antibody Titration: 0.2-1 ug/ml; ELISA Titer: 1:1562500; Positive Control: Human Lung



WB Suggested Anti-PAX3 Antibody ; Positive Control: Lane 1: Flag-PAX3 (overexpression, human), HEK293, 50?g. Lane 2: Mouse, B16F10, 50?g. Lane 3: Human, A375, 50?g. Lane 4: Human, A2058, 50?g; Primary Antibody Dilution : 1:5000; Secondary Antibody : Goat a



Green: FITC
Blue: DAPI

See IHC 1 Data and Customer Feedback for more Information

Sample Type : Mouse B16F10 Primary Antibody Dilution : 1:200 Secondary Antibody : Goat anti-rabbit-FITC Secondary Antibody Dilution : 1:800 Color/Signal Descriptions : Green: FITC Blue: DAPI Gene Name : PAX3 Submitted by : Tsu Fang Wu, Institute of Molecular Bi