

Product datasheet for **TA330984**

CHST13 Rabbit Polyclonal Antibody

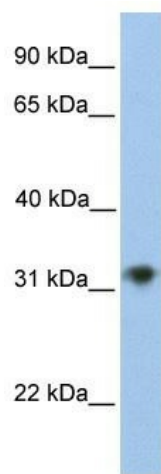
Product data:

Product Type:	Primary Antibodies
Applications:	WB
Recommended Dilution:	WB
Reactivity:	Human
Host:	Rabbit
Isotype:	IgG
Clonality:	Polyclonal
Immunogen:	The immunogen for anti-CHST13 antibody: synthetic peptide directed towards the C terminal of human CHST13. Synthetic peptide located within the following region: CHPCRLRYDVVGKFETLAEDAAFVLGLAGASDLSFPGPPRPRGAAASRDL
Formulation:	Liquid. Purified antibody supplied in 1x PBS buffer with 0.09% (w/v) sodium azide and 2% sucrose. <i>Note that this product is shipped as lyophilized powder to China customers.</i>
Purification:	Affinity Purified
Conjugation:	Unconjugated
Storage:	Store at -20°C as received.
Stability:	Stable for 12 months from date of receipt.
Predicted Protein Size:	39 kDa
Gene Name:	carbohydrate sulfotransferase 13
Database Link:	NP_690849 Entrez Gene 166012 Human Q8NET6



[View online »](#)

Background:	CHST13 catalyzes the transfer of sulfate to position 4 of the N-acetylgalactosamine (GalNAc) residue of chondroitin. Chondroitin sulfate constitutes the predominant proteoglycan present in cartilage and is distributed on the surfaces of many cells and extracellular matrices. It transfers sulfate to the C4 hydroxyl of beta1,4-linked GalNAc that is substituted with a beta-linked glucuronic acid at the C-3 hydroxyl. C4ST3 transfers sulfate to the C-4 hydroxyl of beta-1,4-linked GalNAc flanked by GlcUA residues in chondroitin (Kang et al., 2002 [PubMed 12080076]). [supplied by OMIM]
Synonyms:	C4ST3
Note:	Human: 100%; Pig: 77%; Guinea pig: 77%
Protein Families:	Transmembrane
Protein Pathways:	Chondroitin sulfate biosynthesis, Sulfur metabolism

Product images:

WB Suggested Anti-CHST13 Antibody Titration:
0.2-1 ug/ml; Positive Control: 721_B cell lysate