

## Product datasheet for **TA330345**

### 14-3-3 theta (YWHAQ) Rabbit Polyclonal Antibody

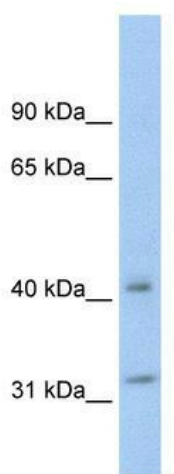
#### Product data:

Product Type:	Primary Antibodies
Applications:	IHC, WB
Recommended Dilution:	WB, IHC
Reactivity:	Human, Mouse
Host:	Rabbit
Isotype:	IgG
Clonality:	Polyclonal
Immunogen:	The immunogen for anti-YWHAQ antibody: synthetic peptide directed towards the N terminal of human YWHAQ. Synthetic peptide located within the following region: SVAYKNVVGRRSAWRVISSIEQKTDTSKLLQLIKDYREKVESELSIC
Formulation:	Liquid. Purified antibody supplied in 1x PBS buffer with 0.09% (w/v) sodium azide and 2% sucrose. <i>Note that this product is shipped as lyophilized powder to China customers.</i>
Conjugation:	Unconjugated
Storage:	Store at -20°C as received.
Stability:	Stable for 12 months from date of receipt.
Predicted Protein Size:	28 kDa
Gene Name:	tyrosine 3-monooxygenase/tryptophan 5-monooxygenase activation protein theta
Database Link:	<a href="#">NP_006817</a> <a href="#">Entrez Gene 22630 Mouse</a> <a href="#">Entrez Gene 10971 Human</a> <a href="#">P27348</a>

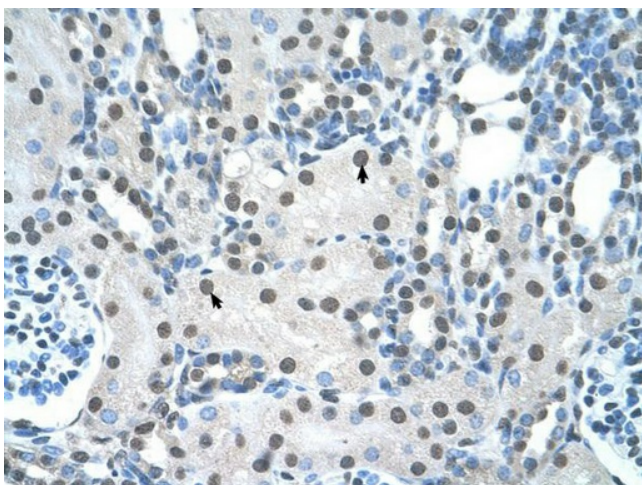


[View online »](#)

<b>Background:</b>	YWHAQ belongs to the 14-3-3 family of proteins which mediate signal transduction by binding to phosphoserine-containing proteins. This highly conserved protein family is found in both plants and mammals, and this protein is 99% identical to the mouse and rat orthologs. This gene is upregulated in patients with amyotrophic lateral sclerosis. This gene product belongs to the 14-3-3 family of proteins which mediate signal transduction by binding to phosphoserine-containing proteins. This highly conserved protein family is found in both plants and mammals, and this protein is 99% identical to the mouse and rat orthologs. This gene is upregulated in patients with amyotrophic lateral sclerosis. It contains in its 5' UTR a 6 bp tandem repeat sequence which is polymorphic, however, there is no correlation between the repeat number and the disease.
<b>Synonyms:</b>	1C5; 14-3-3; HS1
<b>Note:</b>	Immunogen sequence homology: Bovine: 100%; Dog: 100%; Guinea pig: 100%; Human: 100%; Mouse: 100%; Pig: 100%; Rat: 100%; Chicken: 93%; Zebrafish: 75%
<b>Protein Families:</b>	Druggable Genome
<b>Protein Pathways:</b>	Cell cycle, Neurotrophin signaling pathway, Oocyte meiosis, Pathogenic Escherichia coli infection

**Product images:**

WB Suggested Anti-YWHAQ Antibody Titration: 0.2-1 ug/ml; Positive Control: SW620 cell lysate YWHAQ is strongly supported by BioGPS gene expression data to be expressed in Human SW620 cells



Human kidney