

## Product datasheet for **TA330315**

### ASCL1 Rabbit Polyclonal Antibody

#### Product data:

Product Type:	Primary Antibodies
Applications:	WB
Recommended Dilution:	WB
Reactivity:	Human
Host:	Rabbit
Isotype:	IgG
Clonality:	Polyclonal
Immunogen:	The immunogen for anti-ASCL1 antibody: synthetic peptide directed towards the middle region of human ASCL1. Synthetic peptide located within the following region: AGVLSPTISPNYSNDLNSMAGSPVSSYSSDEGSYDPLSPEEQELLDFTNW
Formulation:	Liquid. Purified antibody supplied in 1x PBS buffer with 0.09% (w/v) sodium azide and 2% sucrose. <i>Note that this product is shipped as lyophilized powder to China customers.</i>
Conjugation:	Unconjugated
Storage:	Store at -20°C as received.
Stability:	Stable for 12 months from date of receipt.
Predicted Protein Size:	25 kDa
Gene Name:	achaete-scute family bHLH transcription factor 1
Database Link:	<a href="#">NP_004307</a> <a href="#">Entrez Gene 429 Human</a> <a href="#">P50553</a>



[View online »](#)

**Background:**

ASCL1 may play a role at early stages of development of specific neural lineages in most regions of the CNS, and of several lineages in the PNS. ASCL1 is essential for the generation of olfactory and autonomic neurons. ASCL1 activates transcription by binding to the E box (5'-CANNTG-3'). This gene encodes a member of the basic helix-loop-helix (BHLH) family of transcription factors. The protein activates transcription by binding to the E box (5'-CANNTG-3'). Dimerization with other BHLH proteins is required for efficient DNA binding. This protein plays a role in the neuronal commitment and differentiation and in the generation of olfactory and autonomic neurons. Mutations in this gene may contribute to the congenital central hypoventilation syndrome (CCHS) phenotype in rare cases. Publication Note: This RefSeq record includes a subset of the publications that are available for this gene. Please see the Entrez Gene record to access additional publications.

**Synonyms:**

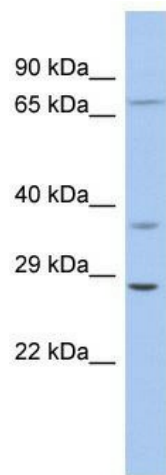
ASH1; bHLHa46; HASH1; MASH1

**Note:**

Immunogen sequence homology: African clawed frog: 100%; Bovine: 100%; Chicken: 100%; Dog: 100%; Guinea pig: 100%; Human: 100%; Mouse: 100%; Rat: 100%

**Protein Families:**

Druggable Genome, Transcription Factors

**Product images:**

WB Suggested Anti-ASCL1 Antibody Titration: 0.2-1 ug/ml; ELISA Titer: 1:62500; Positive Control: OVCAR-3 cell lysate ASCL1 is strongly supported by BioGPS gene expression data to be expressed in Human OVCAR3 cells