

Product datasheet for **TA330268**

Tpit (TBX19) Rabbit Polyclonal Antibody

Product data:

Product Type:	Primary Antibodies
Applications:	IHC, WB
Recommended Dilution:	WB, IHC
Reactivity:	Human
Host:	Rabbit
Isotype:	IgG
Clonality:	Polyclonal
Immunogen:	The immunogen for anti-TBX19 antibody: synthetic peptide directed towards the N terminal of human TBX19. Synthetic peptide located within the following region: KPSDGTVSHLLNVVESELQAGREKGDPTKQLQIILEDAPLWQRFKEVTN
Formulation:	Liquid. Purified antibody supplied in 1x PBS buffer with 0.09% (w/v) sodium azide and 2% sucrose. <i>Note that this product is shipped as lyophilized powder to China customers.</i>
Conjugation:	Unconjugated
Storage:	Store at -20°C as received.
Stability:	Stable for 12 months from date of receipt.
Predicted Protein Size:	48 kDa
Gene Name:	T-box 19
Database Link:	NP_005140 Entrez Gene 9095 Human O60806
Background:	TBX19 is a member of a phylogenetically conserved family of genes that share a common DNA-binding domain, the T-box. T-box genes encode transcription factors involved in the regulation of developmental processes. TBX19 is the human ortholog of mouse Tbx19/Tpit gene. Studies in mouse show that Tpit protein is present only in the two pituitary pro-opiomelanocortin (POMC)-expressing lineages, the corticotrophs and melanotrophs. Mutations in the human ortholog were found in patients with isolated deficiency of pituitary POMC-derived ACTH, suggesting an essential role for this gene in differentiation of the pituitary POMC lineage.



[View online »](#)

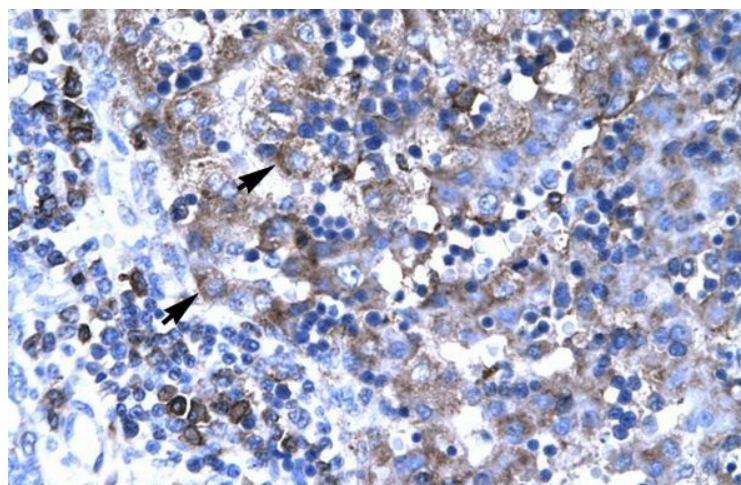
Synonyms: dj747L4.1; TBS19; TPIT

Note: Immunogen sequence homology: Dog: 100%; Pig: 100%; Rat: 100%; Horse: 100%; Human: 100%; Mouse: 100%; Bovine: 100%; Rabbit: 100%; Zebrafish: 100%; Guinea pig: 100%

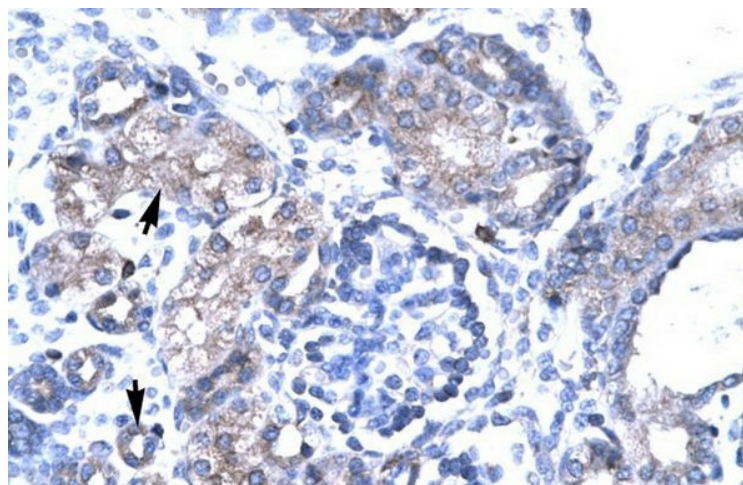
Product images:



WB Suggested Anti-TBX19 Antibody Titration: 1.0-1.5ug/ml; Positive Control: Jurkat cell lysate



Paraffin Embedded Tissue: Human Liver; Cellular with positive label: Hepatocyte (indicated with Arrows); Antibody Concentration: 4~8 ug/ml; Magnification: 400X



Paraffin Embedded Tissue: Human Kidney; Cells with positive label: Epithelial cells of renal tubule (indicated with Arrows); Antibody Concentration: 4~8 ug/ml; Magnification: 400X