

## Product datasheet for **TA330017**

### Thyrotropin Releasing Hormone (TRH) Rabbit Polyclonal Antibody

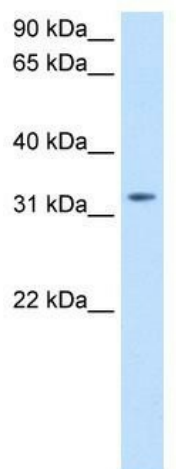
#### Product data:

|                         |  |
|-------------------------|--|
| Product Type:           | Primary Antibodies   |
| Applications:           | WB   |
| Recommended Dilution:   | WB   |
| Reactivity:             | Human  |
| Host:                   | Rabbit   |
| Isotype:                | IgG  |
| Clonality:              | Polyclonal   |
| Immunogen:              | The immunogen for anti-TRH antibody: synthetic peptide directed towards the C terminal of human TRH. Synthetic peptide located within the following region:<br>RALGGPCGPQGAYGQAGLLLGLLDDLRSQGAEEKRQHPGRRAAWVREPL |
| Formulation:            | Liquid. Purified antibody supplied in 1x PBS buffer with 0.09% (w/v) sodium azide and 2% sucrose.<br><i>Note that this product is shipped as lyophilized powder to China customers.</i>                          |
| Conjugation:            | Unconjugated   |
| Storage:                | Store at -20°C as received.  |
| Stability:              | Stable for 12 months from date of receipt.   |
| Predicted Protein Size: | 26 kDa   |
| Gene Name:              | thyrotropin releasing hormone  |
| Database Link:          | <a href="#">NP_009048</a><br><a href="#">Entrez Gene 7200 Human P20396</a>   |
| Background:             | TRH functions as a regulator of the biosynthesis of TSH in the anterior pituitary gland and as a neurotransmitter/ neuromodulator in the central and peripheral nervous systems.                                 |
| Synonyms:               | Pro-TRH; TRF   |
| Note:                   | Immunogen sequence homology: Bovine: 100%; Human: 100%; Zebrafish: 92%; Guinea pig: 84%; Chicken: 78%  |
| Protein Families:       | Druggable Genome, Secreted Protein   |



[View online »](#)

## Product images:



WB Suggested Anti-TRH Antibody Titration: 0.2-1 ug/ml; Positive Control: Transfected 293T