

Product datasheet for **TA329398**

SOX1 Rabbit Polyclonal Antibody

Product data:

Product Type:	Primary Antibodies
Applications:	WB
Recommended Dilution:	WB
Reactivity:	Human, Mouse
Host:	Rabbit
Isotype:	IgG
Clonality:	Polyclonal
Immunogen:	The immunogen for anti-SOX1 antibody: synthetic peptide directed towards the middle region of human SOX1. Synthetic peptide located within the following region: AAGGAHQNSAVAAAAAAAASSGALGALGSLVKSEPSGPPAPAHSRAPC
Formulation:	Liquid. Purified antibody supplied in 1x PBS buffer with 0.09% (w/v) sodium azide and 2% sucrose. <i>Note that this product is shipped as lyophilized powder to China customers.</i>
Conjugation:	Unconjugated
Storage:	Store at -20°C as received.
Stability:	Stable for 12 months from date of receipt.
Predicted Protein Size:	39 kDa
Gene Name:	SRY-box 1
Database Link:	NP_005977 Entrez Gene 20664 Mouse Entrez Gene 6656 Human O00570



[View online »](#)

Background:

SOX1 is a member of the SOX (SRY-related HMG-box) family of transcription factors involved in the regulation of embryonic development and in the determination of the cell fate. SOX1 may act as a transcriptional activator after forming a protein complex with other proteins. In mice, a similar protein regulates the gamma-crystallin genes and is essential for lens development. This intronless gene encodes a member of the SOX (SRY-related HMG-box) family of transcription factors involved in the regulation of embryonic development and in the determination of the cell fate. The encoded protein may act as a transcriptional activator after forming a protein complex with other proteins. In mice, a similar protein regulates the gamma-crystallin genes and is essential for lens development.

Synonyms:

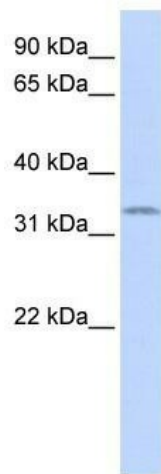
SRY (sex determining region Y)-box 1; SRY-related HMG-box gene 1

Note:

Immunogen sequence homology: Dog: 100%; Human: 100%; Mouse: 100%; Rabbit: 100%; Bovine: 93%; Zebrafish: 80%

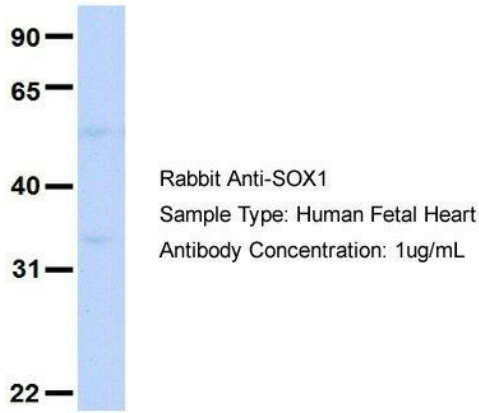
Protein Families:

Adult stem cells, ES Cell Differentiation/IPS, Induced pluripotent stem cells, Transmembrane

Product images:

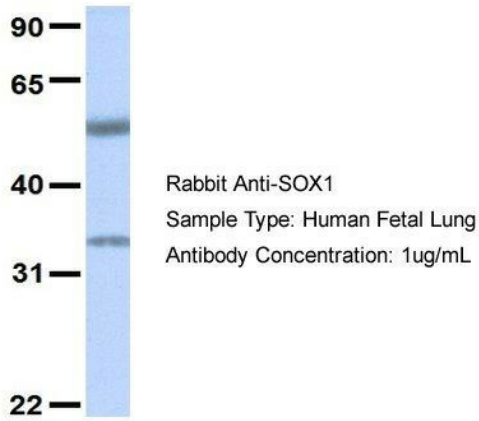
WB Suggested Anti-SOX1 Antibody Titration: 0.2-1 ug/ml; ELISA Titer: 1:1562500; Positive Control: Human Lung

SOX1



Host: Rabbit; Target Name: SOX1; Sample Tissue: Human Fetal Heart; Antibody Dilution: 1.0ug/ml

SOX1



Host: Rabbit; Target Name: SOX1; Sample Tissue: Human Fetal Lung; Antibody Dilution: 1.0ug/ml