

Product datasheet for **TA329317**

SOX21 Rabbit Polyclonal Antibody

Product data:

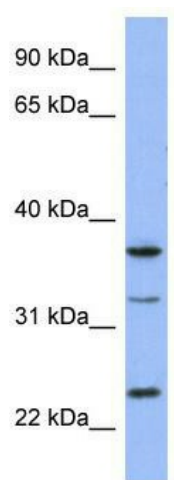
Product Type:	Primary Antibodies
Applications:	WB
Recommended Dilution:	WB
Reactivity:	Human
Host:	Rabbit
Isotype:	IgG
Clonality:	Polyclonal
Immunogen:	The immunogen for anti-SOX21 antibody: synthetic peptide directed towards the middle region of human SOX21. Synthetic peptide located within the following region: EHPDYKYRPRRKPKTLLKKDKFAFPVPYGLGGVADAEHPALKAGAGLHAG
Formulation:	Liquid. Purified antibody supplied in 1x PBS buffer with 0.09% (w/v) sodium azide and 2% sucrose. <i>Note that this product is shipped as lyophilized powder to China customers.</i>
Conjugation:	Unconjugated
Storage:	Store at -20°C as received.
Stability:	Stable for 12 months from date of receipt.
Predicted Protein Size:	28 kDa
Gene Name:	SRY-box 21
Database Link:	NP_009015 Entrez Gene 11166 Human Q9Y651
Background:	SRY-related HMG-box (SOX) genes encode a family of DNA-binding proteins containing a 79-amino acid HMG (high mobility group) domain that shares at least 50% sequence identity with the DNA-binding HMG box of the SRY protein (MIM 480000). SOX proteins are divided into 6 subgroups based on sequence similarity within and outside of the HMG domain. For additional background information on SOX genes, see SOX1 (MIM 602148). [supplied by OMIM, Apr 2004]
Synonyms:	SOX25



[View online »](#)

Note: Immunogen sequence homology: Pig: 100%; Human: 100%; Mouse: 100%; Bovine: 100%; Zebrafish: 86%

Product images:



WB Suggested Anti-SOX21 Antibody Titration: 0.2-1 ug/ml; ELISA Titer: 1:62500; Positive Control: THP-1 cell lysate