

## Product datasheet for **TA329203**

### STAT6 Rabbit Polyclonal Antibody

#### Product data:

Product Type:	Primary Antibodies
Applications:	IHC, WB
Recommended Dilution:	WB, IHC
Reactivity:	Human
Host:	Rabbit
Isotype:	IgG
Clonality:	Polyclonal
Immunogen:	The immunogen for anti-STAT6 antibody: synthetic peptide directed towards the C terminal of human STAT6. Synthetic peptide located within the following region: NLYPKPKDEAFRSHYKPEQMGKDGRGYVPATIKMTVERDQPLTPPELQM
Formulation:	Liquid. Purified antibody supplied in 1x PBS buffer with 0.09% (w/v) sodium azide and 2% sucrose. <i>Note that this product is shipped as lyophilized powder to China customers.</i>
Conjugation:	Unconjugated
Storage:	Store at -20°C as received.
Stability:	Stable for 12 months from date of receipt.
Predicted Protein Size:	94 kDa
Gene Name:	signal transducer and activator of transcription 6
Database Link:	<a href="#">NP_003144</a> <a href="#">Entrez Gene 6778 Human</a> <a href="#">P42226</a>



[View online »](#)

**Background:**

Full-length human STAR6 (NP\_003144) was expressed in E.coli as inclusion body and purified after protein refolding for mouse immunization. Clone 5B1 shows excellent western blot detection of endogenous STAT6 using ACHN cell lysate. The protein encoded by this gene is a member of the STAT family of transcription factors. In response to cytokines and growth factors, STAT family members are phosphorylated by the receptor associated kinases, and then form homo- or heterodimers that translocate to the cell nucleus where they act as transcription activators. This protein plays a central role in exerting IL4 mediated biological responses. It is found to induce the expression of BCL2L1/BCL-X(L), which is responsible for the anti-apoptotic activity of IL4. Knockout studies in mice suggested the roles of this gene in differentiation of T helper 2 (Th2) cells, expression of cell surface markers, and class switch of immunoglobulins. Publication Note: This RefSeq record includes a subset of the publications that are available for this gene. Please see the Entrez Gene record to access additional publications.

**Synonyms:**

D12S1644; IL-4-STAT; STAT6B; STAT6C

**Note:**

Immunogen sequence homology: Dog: 100%; Pig: 100%; Rat: 100%; Horse: 100%; Human: 100%; Mouse: 100%; Bovine: 100%; Rabbit: 100%; Guinea pig: 100%

**Protein Families:**

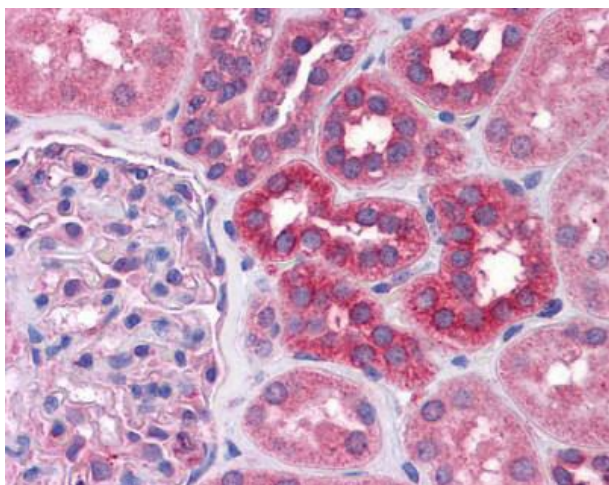
Druggable Genome, ES Cell Differentiation/IPS, Stem cell relevant signaling - DSL/Notch pathway, Stem cell relevant signaling - JAK/STAT signaling pathway, Transcription Factors

**Protein Pathways:**

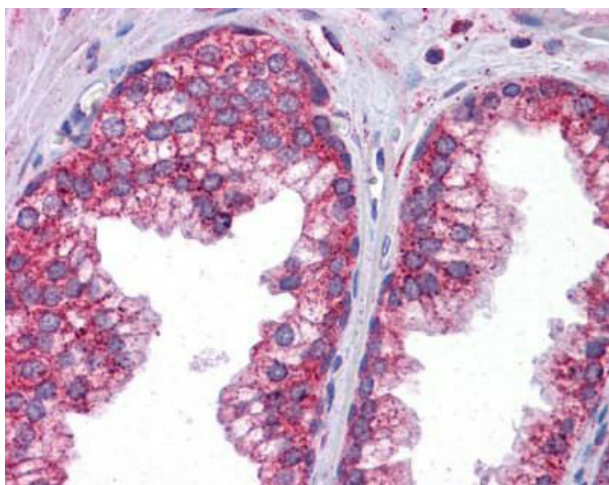
Jak-STAT signaling pathway

**Product images:**

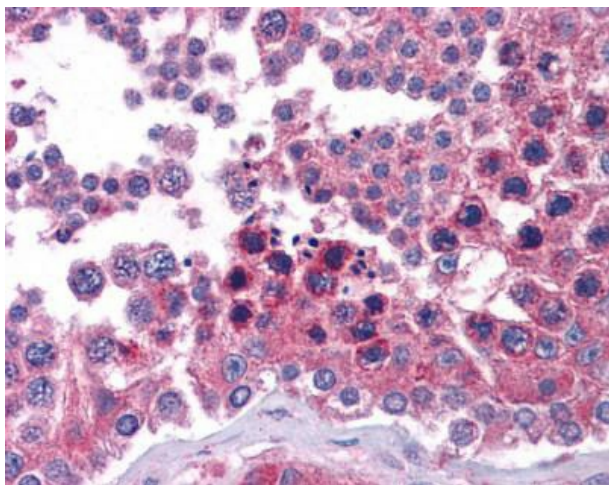
WB Suggested Anti-STAT6 Antibody Titration: 1 ug/ml; Positive Control: HeLa cell lysate STAT6 is strongly supported by BioGPS gene expression data to be expressed in Human HeLa cells



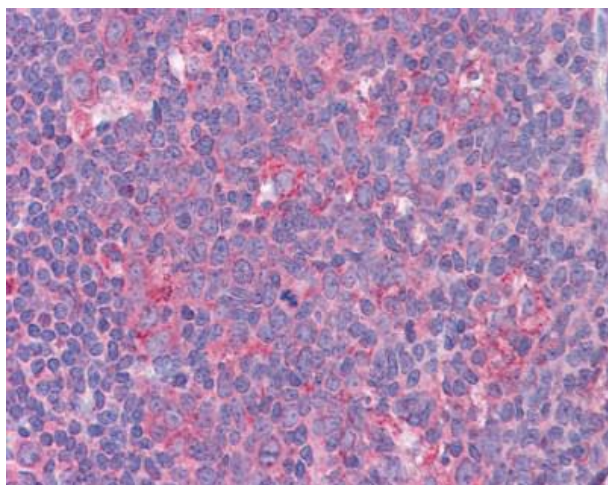
Human Tonsil



Human Testis



Human Prostate



Human Kidney