

Product datasheet for **TA328553**

Retnlb Rabbit Polyclonal Antibody

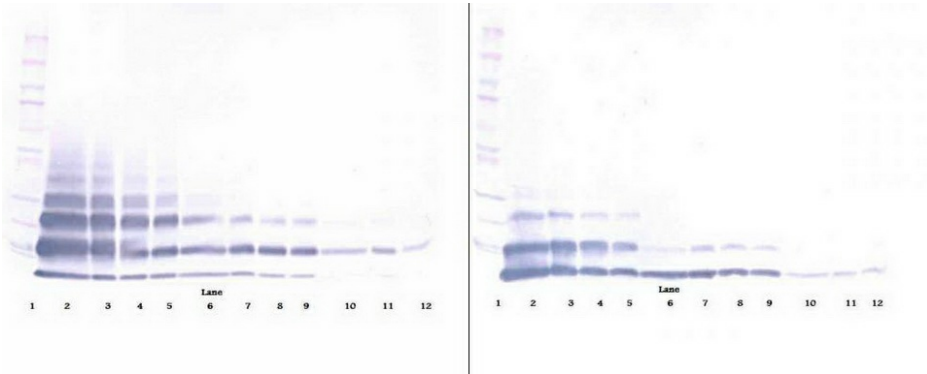
Product data:

Product Type:	Primary Antibodies
Applications:	ELISA, IHC, WB
Recommended Dilution:	WB: 0.1-0.2ug/mL, ELISA: 0.25-2ug/mL, IHC: 0.25ug/mL - 1mg/mL
Reactivity:	Murine
Host:	Rabbit
Isotype:	IgG
Clonality:	Polyclonal
Immunogen:	E.coli derived Recombinant Murine RELM β
Formulation:	A sterile filtered antibody solution was lyophilized from PBS, pH 7.2.
Purification:	Produced from sera of rabbits pre-immunized with highly pure recombinant Murine RELM β . Anti-Murine RELM β specific antibody was purified by affinity chromatography employing immobilized Murine RELM β matrix.
Conjugation:	Unconjugated
Storage:	Store at -20°C as received.
Stability:	Stable for 12 months from date of receipt.
Gene Name:	resistin like beta
Database Link:	NP_076370 Entrez Gene 57263 Mouse Q99P86
Synonyms:	CCRG; FIZZ1; FIZZ2; HXCP2; RELM-beta; RELMb; RELMbeta; RETNL2; XCP2

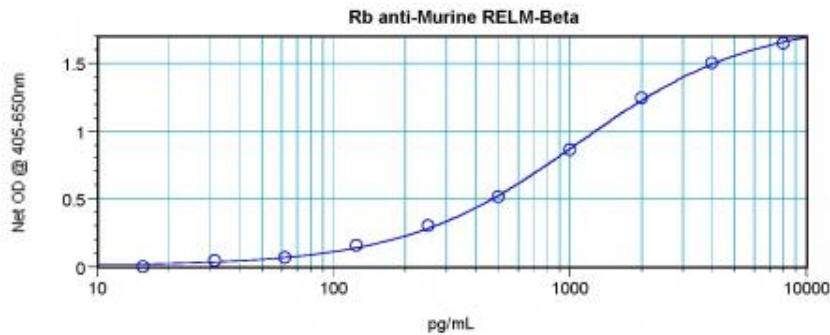


[View online »](#)

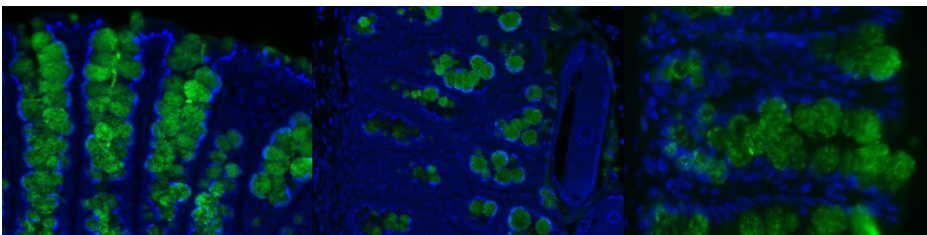
Product images:



To detect Murine RELMbeta by sandwich ELISA (using 100 ul/well antibody solution) a concentration of 0.5 - 2.0 ug/ml of this antibody is required. This antigen affinity purified antibody, in conjunction with Biotinylated Anti-Murine RELMbeta (TA328552) as a detection antibody, allows the detection of at least 0.2 - 0.4 ng/well of recombinant Murine RELMbeta.



To detect Murine RELMbeta by sandwich ELISA (using 100 ul/well antibody solution) a concentration of 0.5 - 2.0 ug/ml of this antibody is required. This antigen affinity purified antibody, in conjunction with Biotinylated Anti-Murine RELMbeta (TA328552) as a detection antibody, allows the detection of at least 0.2 - 0.4 ng/well of recombinant Murine RELMbeta.



To detect Murine RELMbeta by sandwich ELISA (using 100 ul/well antibody solution) a concentration of 0.5 - 2.0 ug/ml of this antibody is required. This antigen affinity purified antibody, in conjunction with Biotinylated Anti-Murine RELMbeta (TA328552) as a detection antibody, allows the detection of at least 0.2 - 0.4 ng/well of recombinant Murine RELMbeta.