

Product datasheet for **TA328515**

Csf3 Rabbit Polyclonal Antibody

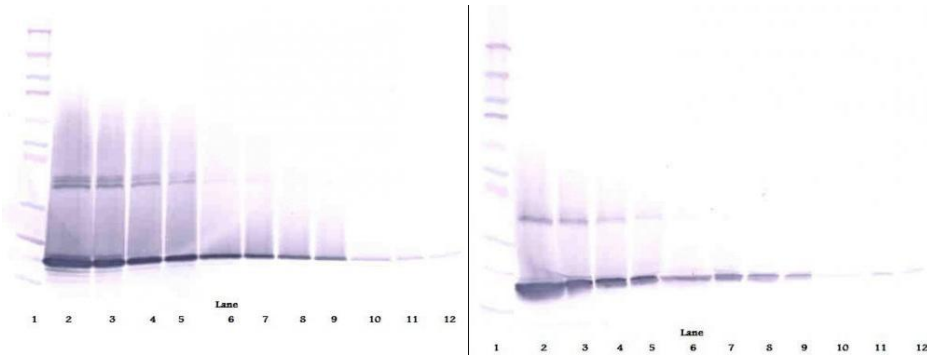
Product data:

Product Type:	Primary Antibodies
Applications:	ELISA, WB
Recommended Dilution:	WB: 0.1-0.2ug/mL, ELISA: 0.25-2ug/mL
Reactivity:	Murine
Host:	Rabbit
Isotype:	IgG
Clonality:	Polyclonal
Immunogen:	E.coli derived Recombinant Murine G-CSF
Formulation:	A sterile filtered antibody solution was lyophilized from PBS, pH 7.2.
Purification:	Produced from sera of rabbits pre-immunized with highly pure (>98%) recombinant mG-CSF. Anti-Murine G-CSF specific antibody was purified by affinity chromatography employing immobilized mG-CSF matrix.
Conjugation:	Unconjugated
Storage:	Store at -20°C as received.
Stability:	Stable for 12 months from date of receipt.
Gene Name:	colony stimulating factor 3 (granulocyte)
Database Link:	NP_034101 Entrez Gene 12985 Mouse P09920
Synonyms:	filgrastim; G-CSF; GCSF; Lenograstim; MGC45931; pluripoietin
Note:	Neutralization: To yield one-half maximal inhibition [ND50] of the biological activity of mG-CSF (0.5ng/ml), a concentration of 0.005-0.010 <=ug/ml of this antibody is required.

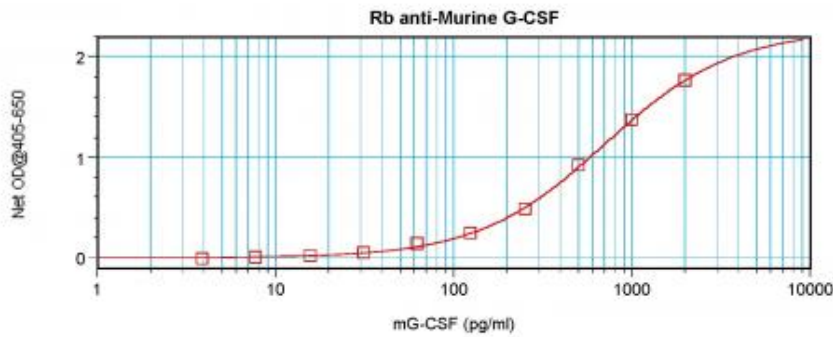


[View online »](#)

Product images:



To detect mG-CSF by sandwich ELISA (using 100 ul/well antibody solution) a concentration of 0.5 - 2.0 ug/ml of this antibody is required. This antigen affinity purified antibody, in conjunction with Biotinylated Anti-Murine G-CSF ([TA328514]) as a detection antibody, allows the detection of at least 0.2 - 0.4 ng/well of recombinant mG-CSF.



To detect mG-CSF by sandwich ELISA (using 100 ul/well antibody solution) a concentration of 0.5 - 2.0 ug/ml of this antibody is required. This antigen affinity purified antibody, in conjunction with Biotinylated Anti-Murine G-CSF ([TA328514]) as a detection antibody, allows the detection of at least 0.2 - 0.4 ng/well of recombinant mG-CSF.